

FREE

Mountain Monthly

APRIL 2026

**Have an
Affordable
Local Easter
Break**

**The
Mounting
Cost
of Fire
Recovery**



EST. | 1906
28 Whittlesea-Kinglake Rd, Kinglake VIC 3763



Come and discover why the Kinglake Pub has been welcoming locals and travellers alike for over a century - good food, good company, and good times await.

(03) 5786 1230
WWW.KINGLAKEPUB.COM

BAR | BISTRO | FUNCTIONS | ACCOMMODATION



OPENING HOURS

HOLIDAY HOURS MAY DIFFER

MON	11:30AM - 7:30PM
TUE	CLOSED
WED	CLOSED
THU	11:30AM - 7:30PM
FRI	11:30AM - 8:30PM
SAT	11:30AM - 8:30PM
SUN	11:30AM - 7:30PM

PH: 5786 1828

PRICES SUBJECT TO CHANGE WITHOUT NOTICE

MONDAYS \$17 PARMA DEAL

comes with chips, salad and can

CHOICE OF :

- PLAIN
- MEXICAN
- HAWAIIAN



THURSDAYS ROAST CHICKEN



BEST TO PRE-ORDER SO YOU DONT MISS OUT

Mountain Monthly

PUBLISHED BY

Mountain Monthly Co-operative Ltd,
a not-for-profit community organisation

POSTAL ADDRESS

PO Box 213, Kinglake 3763

WEBSITE

www.mountainmonthly.com.au

EMAIL

mmkinglake@bigpond.com

EDITOR

Jane O'Connor
0407 318 648 • mmkinglake@bigpond.com

ADVERTISING

Neesha Sinclair
0493 740 926 • advertisingmm@bigpond.com

PRODUCTION/GRAPHIC DESIGN

Ann Friedel Publishing

ACCOUNTS

Nadia Chevriat
0447 175 240 • mountainmonthlybilling@gmail.com

DISTRIBUTION

Sean O'Connor

MM BOARD OF DIRECTORS

Chair: Dr Angela Palmer
Treasurer: Chris Boyer
Board members: Rob Verhagen

MM PRINTED BY

Prominent Press Pty Ltd

MM DISTRIBUTION

1500 copies to Kinglake, Kinglake Central, Pheasant Creek, Kinglake West, Flowerdale, Glenburn, Castella, Toolangi, Smiths Gully, St. Andrews, Hurstbridge, Yarra Glen, Healesville, Yea, Alexandra and Whittlesea.

ADVERTISING RATES PER ISSUE 2025

Black and White Rates Space Design

1/16	(45mm w X 65mm h)	\$39.00	\$12.00
1/8	(90mm w X 60mm h)	\$67.00	\$17.00
1/4	(90mm w X 130mm h)	\$129.00	\$23.00
1/3	(188mm w X 85mm h)	\$145.00	\$26.00
1/2	(188mm w X 130mm h)	\$200.00	\$32.00
Full Page	(188mm w X 275mm h)	\$350.00	\$47.00

Please supply completed artwork as CMYK high resolution PDF or jpg.

Full Colour Rates Space Design

1/16	45mm w X 65mm h)	\$59.00	\$19.00
1/8	(90mm w X 60mm h)	\$99.00	\$24.00
1/4	(90mm w X 130mm h)	\$190.00	\$28.00
1/3	(188mm w X 85mm h)	\$237.00	\$33.00
1/2	188mm w X 130mm h)	\$278.00	\$38.00
Full Page	188mm w X 275mm h)	\$557.00	\$64.00
Half Page Inside Front or Back Cover		\$320.00	\$38.00
Inside Front or Back Cover		\$654.00	\$64.00
Back Cover		\$747.00	\$64.00

Supplied artwork to be emailed at correct size and supplied as 300dpi CMYK High Resolution PDF, no crop marks.

Line Classified – \$12.00 prepaid \$15.00 account

Changes to existing ads – \$15.00. (1-2 changes only)

Position surcharge: 30% for page 5 and 20% for page 7.

Late fee past deadline: 5% of total account.

Advertising packages available in 3, 6 or 12 month blocks.

MAY 26 ISSUE DEADLINE

15 APRIL 2025

FOR BOTH ADS AND ARTICLES

Please no late copy



FOLLOW US ON FACEBOOK



DISCLAIMER:

The views expressed in Letters to the Editor and news articles are not necessarily those of the Editor unless expressly indicated and signed. All advertising copy is the responsibility of the advertiser, not the Editor.

PHOTOGRAPHY:

All photographs submitted become the property of MM and their future usage is at the Editor's discretion.

Mountain Monthly Co-operative Ltd. All rights reserved. No reproduction, copy or transmission of this publication may be made without written permission. No paragraph or any artistic work of this publication may be reproduced, copied or transmitted without written permission, or in accordance with the provisions of the Copyright Act 1968 (Cth) (as amended). Any person who does any unauthorised act in relation to this publication may be liable to civil claims for damages or an account of profits, together with injunctive relief.

MM SUBSCRIPTION

Are you finding it difficult to get your copy of MM before they have run out? You can become a subscriber and have your copy posted each month for only \$59 per year. Just fill in this subscription slip and send it with your cheque to

Mountain Monthly, PO Box 213 Kinglake 3763, or deposit directly into Mountain Monthly account

BSB 633 000 Account Number 138 539 010 with your surname as the reference.

Name.....

Postal Address

..... Postcode

Phone.....

Email.....

Method of payment
Please tick

Direct Deposit

Cheque

Opening Beautiful Local Windows

When Kinglake resident, John Pottage, started teaching leadlight at the Kinglake Ranges Neighbourhood House 10 years ago, he didn't imagine just how popular it would become in a small community.

When a visitor to his own home saw the stunning glasswork John had done, they asked if he could teach it to others.

Ever modest, John was encouraged to teach it at KRNH and his passion has never dimmed.

Having previously worked as a careworker, John, says he loves the diversity among his course participants and their interaction as they create beautiful items that enhance their sense of achievement.

Two of John's current 'pupils' are a case in point.

CONTINUED ON PAGE 8

Pictured left: Jane Hayward's beautiful Fairy Wren leadlight window.



IN THIS ISSUE

COVER PHOTO: *An early Autumn burst from the flowering gums.*
Photo: Jane O'Connor

- | | | | |
|--|--------------------------------------|--|---|
| 5. Counting the Cost of The Longwood Fires | 7. Coding at Kinglake library | 19. Health & Wellbeing | 36. Emergency Services |
| 5. Bendigo Bank Closes Kinglake Branch | 11. Inner Wheel Club Kinglake Ranges | 23. Stock Water After Fire | 39. Business & Trades Guide |
| 6. What's on | 11. Summer Fires Deadline Extended | 24. Kinglake Landcare | 44. Local Business Directory |
| 6. Royal Children's Hospital Good Friday Appeal in the Kinglake Ranges | 13. Property Report | 25. Beware of Weeds in Interstate Fodder | 45. Community & Emergency Contact Numbers |
| 7. Enjoy an Affordable Easter Close to Home | 13. Jeff and Geordie Find a New Home | 26. Gardening with Alex | 46. Murrindindi Shire West Map |
| | 14. Finance Report | 27. Environment Matters | |
| | 16. Kinglake CWA | 29. School Reports | |
| | 16. Whittlesea Community House | 32. Kinglake Rotary | |
| | 17. Neighbourhood House | 34. Sport | |
| | 18. Our Heritage | | |

Counting the Cost of The Longwood Fires

Some of our neighbouring townships have seen a 90% drop in visitor spending following the January Longwood bushfires.

Apart from the huge impact on businesses, the shire's primary producers and associated businesses are also battling enormous stock losses and an estimated \$120 million replacement costs for fencing and infrastructure.

Murrindindi Shire Council has released an Impact Report that starkly shows how the Longwood fire came on top of earlier floods and without a coordinated investment strategy, government and industry funding, the shire is facing a long road to recovery.

The Council's Economic Development Strategy and Shaping Murrindindi's Future plan provides a roadmap for recovery and future economic prosperity, but says recovering from this catastrophic natural disaster will require substantial targeted support from State and Federal government along with partnership and significant investment from the private sector.

One important way that we can help is to return to the affected areas and support local businesses and communities impacted by the fires.

Feedback from affected businesses and primary producers, supported by data from Agriculture Victoria, shows recovery will take years and requires sustained, flexible and outcomes-focused support that helps enterprises reopen, re-employ and rebuild productive capacity.

Primary producers and small businesses across the entire Shire have experienced significant income disruption, livestock and crop losses, and extensive damage to fencing and core infrastructure. Almost 7,800 animals were killed and over 4,800 kilometers of fencing destroyed, with replacement costs estimated at over \$120 million - a scale of loss that directly affects regional supply chains, on-farm

productivity and local employment. Loss of sheds, machinery and irrigation systems continues to delay recovery and keeps businesses from returning to full production.

New spending data highlights immediate economic shock. The fire event resulted in \$3.47 million reduction in total spending across Murrindindi Shire over 24 days.

This is a 39% decline compared to a non event trading period. Total spend fell from \$12.2 million to \$8.75 million, driven almost entirely by the collapse in visitor expenditure.

Visitor spending declined by \$3.55 million, or 74%. Resident spending remained largely stable, falling by just \$60,247, or 2%. This indicates continued local purchasing of essential goods and services, but a sharp contraction in the visitor economy.

- Yarck recorded an estimated \$375,000 loss, with visitor spending down around 90%.
- Alexandra recorded a 77% fall in visitor spending and a 22% reduction in total spend, despite a 9% increase in resident activity.
- Eildon experienced a 53% decline in visitor spend and a 47% reduction in total spending.
- Marysville saw visitor expenditure fall by 75%, driving a 51% drop in total spend.
- Yea saw a 90% collapse in visitor spend, contributing to a 36% decline in total local expenditure.

The data also shows substantial gaps in insurance coverage. Many businesses are uninsured or under insured and delays in insurance assessments and payouts are increasing financial stress and limiting the ability of otherwise viable enterprises to reinvest quickly.

The shire says families and business owners are dealing with ongoing stress, safety worries and uncertainty about the future. At the same time, fewer visitors

are coming to the region, and with many farmers nearing retirement, there is a real risk to local jobs, productivity and the long-term strength of our communities.

One-off grants and short-term relief are seen as insufficient for asset heavy, production-based businesses. The report calls for integrated economic, infrastructure and wellbeing recovery programs that are designed for the realities of regional production, and that mobilise multiple partners to stabilise and rebuild the Shire economy.

Portfolio Councillor for Economic Development, Local Jobs, and Skills, Sandice McAulay, says it's important we acknowledge the significant and ongoing impacts these natural disasters have caused our community.

For example, fencing is critical economic infrastructure and without targeted support to rebuild these foundations, businesses cannot restore production, retain staff or sustain operations, impacts that flow through the whole regional economy.

"We are inviting philanthropists and business leaders to partner with us in practical, high-impact recovery: rebuilding productive infrastructure, backing local contractors and jobs, and supporting integrated case management and mental health services so people can stay on their land, keep businesses open and communities strong if you have plans to invest and support the local economy please reach out to the team.

Flexible programs, reduced administrative burden, funded local case management and integrated mental health support are key to keeping businesses operating and communities resilient.

"We can't forget the impact that visitors to the region have on our local economy. We are open for business and look forward to seeing visitors back supporting local business as we set our vision to the future", Cr McAulay said.

Bendigo Bank Closes Kinglake Branch

Customers of the Kinglake Branch of the Bendigo Bank received a notification in mid-March informing them the branch will permanently close from 12.30pm on Friday 5 June.

The Bank said the closure follows a recent review of customer visitation and evolving needs.

Customer accounts will be automatically transferred to Community Bank Hurstbridge, located at 808 Main Road, Hurstbridge at close of business on this date, unless customers choose to do otherwise before this date.

The bank said it would continue to support community groups within the local community.

Customers with any queries were being urged to contact Branch Manager, Mark Couche, on 0499 007 253 or Senior Branch Manager, Tina Elmer, on 0430 447 752.

3 Good Friday	6 Easter Monday	14 & 28 Trivia at The Pub	20 School holidays begin	23 Code Club at the Library	25 ANZAC Day Dawn Service at St Peter's Church	25 ANZAC Day Lions Club service 10am Community Centre	26 Kinglake Market	29 Council Community Meeting at KRNH
-------------------------	---------------------------	---	------------------------------------	---------------------------------------	--	---	------------------------------	--

WHAT'S ON KINGLAKE LIBRARY

April 2026

Digital Literacy

Monday 11.00 - 12.00 pm & Thursday 2.00 - 3.00 pm

Storytime - Baby bounce

Tuesday 10.30 - 11.30 am during school terms

Boomerang Bags

Wednesday 10.00 am - 2.00 pm

Coding

Thursday 3.45 pm
23 April - 25 June
Bookings essential

Storytime 2 - 5 years

Friday 10.30 - 11.30 am during school terms

Craft on Friday

Adults 2.00 pm
School age children 3.45 pm

School Holidays

Wednesday 8 April 3.00 pm - Kids movie, popcorn provided

Tuesday 14 April 3.00 pm - Kids in the Kitchen

Thursday 16 April 10.30 am - Cardboard building and creations, tools provided

Pageturners

Monday 27 April 4.00 - 5.00pm

Bookings are essential.

Book online at murrindindi.vic.gov.au/libraries or call us on 5772 0333.



Royal Children's Hospital Good Friday Appeal in the Kinglake Ranges

This Easter, the Kinglake Ranges Emergency Services will join forces again, collecting for the Royal Children's Hospital Good Friday Appeal. Volunteer members of the SES, CERT and CFA brigades from Kinglake and Kinglake West will be collecting around the town, at intersections and door-knocking Kinglake residents.

Local businesses and the Whittlesea Bowls Club have been supporting the appeal with collection cans on the counters.

Last year Kinglake Ranges residents and visitors contributed almost \$8,000 to the appeal. Let's see if we can beat that total this year. Find the Kinglake Ranges progressive total on the Good Friday Appeal regional tally board. Over the past 16 years, our community has raised \$105,000 for this Appeal.

The Kinglake Ranges community is asked to please donate generously again this year.

Donate and be rewarded with a chocolate Easter egg.

Let us show our Kinglake spirit of generosity to those children who need it most.



Enjoy an Affordable Easter Close to Home

It was just the usual sort of chat about what people were planning for the Easter break.

But, front of mind for everybody were the rising fuel prices, cost of living and another interest rate rise to add to the budget.

Plans for longer, more adventurous trips were being shelved, especially with the thought that fuel could be tricky to find in more remote areas by that stage.

But, if the desire is there to enjoy a change of scenery, let's look closer to home and support our shire businesses in the process.

Check out the devastating impact the January Longwood fires have had on our towns and tourist attractions as outlined on page 5 in this edition.

With the fire event itself, followed by ongoing road closures and

recovery efforts, visitor numbers simply disappeared.

The decision to visit and enjoy a great deal of what they have on offer- from the likes of Alexandra to Marysville, Yarck, Eildon and Yea and their surrounds – would be welcomed with open arms.

And yes, there is still the aftermath to be seen through these areas and road conditions need to be adhered to, but the townships are open for business.

If staying home and getting stuck into some autumn chores is the preferred option, then the vexed question of what services might be disrupted is bound to arise.

Check out page 12 in this edition to determine what changes there are to the likes of rubbish collection services and tip opening times.

Coding at Kinglake library

The Kinglake Library are running a Code Club for school aged children grade 4 and above in term 2 again this year as an introduction to the world of STEM learning.

The course has been developed by a national not-for-profit organisation called Creative Bytes and is designed to be a pathway for young students with no prior knowledge of programming, coding or technology to start learning.

Lots more information is available on their website creativebytes.org

Murrindindi Shire Council along with Foundation Murrindindi helped make this accessible for our children last year and have sponsored the no-cost after school course for Kinglake this coming term for local boys and girls.

The outcome of the first programme is to build a small game using simple coding tools as a method to introduce STEM concepts to students.

The course will be delivered by a local resident who has worked in the IT industry for 20 years, is degree qualified in IT and has volunteered his time to bring a real world perspective to the course.

It will be held at Kinglake Library after school on Thursdays from 23 April in term 2. It is a 10 session programme. The sessions start at 3:45pm and run to 4:45pm each Thursday at the Library.



Weekly attendance is required to keep up with the course work progression.

Laptops and the like will be at the library, students do not require a computer and spots are limited to 8. Contact the Library for a registration form on 5772 0750.

Past participants have said how much their child loves coming to coding. It's really extending their understanding. "They come home and show me what they've created each session and they love it.

I love the opportunities our local library creates for our children".



CONTINUED FROM PAGE 4

Jane Hayward is well known for her years of dedicated service to education as the Principal of Strathewen Primary School.

When Jane's very busy life changed and she took time out from teaching, she found something she'd wanted to try and fell in love with it.

Busy hands and the creative outcome – 'getting on the tools', as she calls it – provided some pretty good medicine.

With a bit of music playing in the background at classes, humming along, enjoying interaction with the group and feeding off John's passion has made a slow process into a highly satisfying pursuit.

Jane is already planning her next 3 pieces.

Local wildlife carer, Lorraine Casey, had always wanted to try her hand at it and there it was – close to home at KRNH, and with John's passion the perfect attraction – she set about capturing our native wildlife in glass to install in her own home.

She too is already planning her next piece, having done just one practice piece previously.

John, she says, is a community treasure and his passion, ability to get the class humming

and hands-on help is incredibly rewarding.

Suffice to say, John's evening class is so popular he has been running another daytime class.

Both are full and he has even had to install a new workbench to accommodate extras.

"I'm blown away that we have had this level of interest in our small community", John says.

If you are interested in participating in John's classes, you will need to book ahead by calling KRNH on 5786 1301.

Above left: Lorraine Casey has captured our native wildlife in leadlight.

Left: Leadlight Tutor, John Pottage, didn't just stop at the teaching, but was on hand to install the outcomes for a stunning in-home feature.



Cindy McLeish MP State Member for Eildon

*Your local voice for
Murrindindi Shire
and the Kinglake Ranges*



Contact Cindy

Shop 10, 38-40 Bell Street, Yarra Glen

PO Box 128, Yarra Glen VIC 3775

03 9730 1066

Cindy.McLeish@parliament.vic.gov.au

www.CindyMcLeish.com.au

Authorised by Cindy McLeish MP, Shop 10, 38-40 Bell Street, Yarra Glen.
Funded from Parliament Electorate Office & Communications Budget.

Hall's Funeral Services

An Australian owned and operated family
Funeral business that understands the needs
of people at a time of grief.

Offering a wide range of services including
pre-arranged and prepaid funerals.



Phone: 9438 5416

24 Hours a Day, 7 Days a Week

• 15 Station Street, Diamond Creek

• 50 Church Street, Whittlesea

www.hallsfunerals.com.au

Anzac Day

Lest We Forget



ANZAC DAY SATURDAY 25th APRIL 2026

DAWN SERVICE

A ceremony will be held at the Arch/
Second World War Memorials,
at the intersection of Walnut and Forest Streets
commencing at 05:30 a.m.

MARCH

The ANZAC Day march will
commence with assembly at the
Whittlesea Bowls Club at 2 p.m.
Step-off is at 2:30 p.m.

Wreath laying will be conducted at:

The Arch, Second World War
and Vietnam Memorials
at Forest/Walnut Streets
and the Soldier's Memorial at
Laurel/Church Streets.

Wreaths are to be placed on a table
at the Arch prior to commencement
of the march, and those laying wreaths
will be called forward by the MC
at the appropriate time.

Posies can be carried and laid at the conclusion
of the wreath laying.

Veterans and ex-servicemen/women
are to wear medals.

Relatives/descendants of ex-servicemen/women,
displaying medals on right chest will be placed
in the veteran's group.

Angela Roper (President)
whittlesearsl@yahoo.com



SONGBIRD CAFE & LARDER

Local fresh cuisine for everyone



OPEN WEDNESDAY TO SUNDAY
10 WHITTLESEA - KINGLAKE ROAD, KINGLAKE
(03) 5786 1275

WWW.SONGBIRDCAFEANLARDER.COM

**FAIR
DINKUM
BUILDS**

Sheds & More
DIAMOND
VALLEY

diamondvalley@fdbuilds.com.au
0432 511 024



Sheds . Garages . Patios . Carports . Storage . Commercial Sheds

- At Fair Dinkum Builds, we don't do gimmicks, just quality sheds and a hassle-free experience.
- From start to finish, we can handle everything so you don't have to.
- No shortcuts. No runaround. Just a solid, stress-free build with real value at every step.



WEBSITE



AUSSIE



20 YEARS



QUALITY



FLEXIBLE



LOCAL

TRADING HOURS:

Closed Monday & Tuesday.

Wednesday - Friday 5pm to late

Saturday & Sunday 4pm to late

Special Diets

We cater for special dietary requirements



Little Italy

Family Restaurant & Pizzeria

A slice of Italy in the hills

Family Restaurant & Pizzeria

Pizza, Pasta, Focaccia

✓ **Ribs, Parmas**

✓ **Risottos & more**

**DINE-IN, TAKEAWAY,
FUNCTIONS
& CATERING**

**Try our
SQUARE
pizzas!**

1274 Whittlesea-Yea Road, Kinglake West

FULLY LICENSED



Inner Wheel Club Kinglake Ranges

Autumn has arrived in the ranges, a coolness to the air whispering through the trees, the silence of the leaves falling, to the clear bright blue skies. A time to prepare for winter.

The Inner wheel Club Kinglake Ranges have been busy. During January club members voted to donate from our charity account. To Aussie Hay Runners that have been helping the local farmers of district affected by recent bushfires with much needed animal feed.

Last month was the first Kinglake Rotary Market, a cool misty, drizzly market in the summer time. It was so lovely to be back cooking up a storm at the BBQ, greeting regular customers, new customers and other stall holders.

On show for the first time at our March 2026 meeting, we met our new flag, generously made available for us through an Inner Wheel Australia Grant which our members applied for last year. This flag will be on show at all upcoming Kinglake Rotary markets and more.

We invite everyone to come for a photo and chat about what Inner Wheel means to us and how we are available for all women who might have the time to give back to their community. We are more than a Club of Volunteer women who enjoying giving we also hold friendship close .

Our next Meeting will be on Tuesday 7 April 2026. Always a chair available for new members.

Inner Wheel Club Kinglake Members will also be assisting on ANZAC day for the dawn service held at St Peters Church Kinglake. Be sure to say hello as you pick up your hot drinks that might or might not include a small tippie!

For more inquiries Please contact us: Either by the Inner Wheel Australia website or Email us iiw.au.kinglakeranges@gmail.com.au

Our Members will be cooking up a storm (BBQ) at the next Kinglake Rotary Market.

Sunday 19th April 2026. Stop by for a tasty sausage and we always have time for questions and a chat.

Fire Enquiry Deadline Extended

The deadline for the Victorian Parliament's enquiry into the 2026 summer bushfires has been extended to 19 April, with the reporting date now set for 28 July.

Fire-affected communities, including the Murrindindi Shire had requested the extension because of the ongoing recovery challenges of fire-affected areas.

The Council advocated that the time frame was not reasonable given many residents were still dealing with the immediate issues of seeking relief, shelter and commencing their clean up.

The original closing date for submissions was 15 March.

Mayor, Cr Damien Gallagher, said the extension was a positive step that recognised the reality our communities are facing.

"Extending the timeline gives Murrindindi residents, businesses and community groups a fair opportunity to share their experiences and help shape recommendations that improve how Victoria prepares for and responds to bushfires", he said.

Cr Gallagher said the January fires had a profound impact across Murrindindi, reinforcing the importance of ensuring regional voices are heard.

"Our communities experienced the worst

of the fires this summer – and reportedly the worst bushfire on private property in Victoria's recent history. Their insights and lived experience are critical to informing the inquiry".

People who have been impacted by the fires, have been involved in response or recovery, or have insights to contribute are encouraged to make a submission to the inquiry.

More information about the inquiry and how to make a submission is available at:

www.parliament.vic.gov.au/get-involved/inquiries/inquiry-into-the-2026-summer-fires-across-victoria

April 2026

Changes to Council services over Easter

During the Easter long weekend, 3 to 6 April, some Council services will change:

- Kerbside collection will continue as usual.
- Resource Recovery Centres will operate as usual, except they will be closed on Good Friday, 3 April.
- Alexandra Landfill will be closed to the public on Good Friday and Easter Monday. Visit murrindindi.vic.gov.au/RRC for details.
- Libraries and Customer Service Centres will be closed from Good Friday and will reopen on Tuesday 7 April.

For urgent issues such as stock on roads, dog attacks or unsafe road conditions, including fallen trees, call 5772 0333 at any time.

Council will resume normal services on Tuesday 7 April. Lodge a request at murrindindi.vic.gov.au/request

Governor of Victoria visits fire-impacted communities in Murrindindi

Her Excellency Professor the Honourable Margaret Gardner, Governor of Victoria, visited fire affected communities across Murrindindi Shire in late February.

During the two day visit, the Governor travelled to Highlands, Yarck and Fawcett, where she met with residents, volunteers, emergency services and Council representatives to hear about the impact of the January 2026 fires and the ongoing recovery.

Murrindindi was the hardest hit area in Victoria during the fires. Around 144,000 hectares burned in the Longwood fire, destroying more than 190 homes in the Shire and causing widespread disruption for local communities already recovering from the 2009 bushfires and 2022 floods.



Have your say in Council's annual Community Satisfaction Survey

Murrindindi Shire residents may receive a call or see an online invitation to take part in our annual Community Satisfaction Survey.

The survey is being conducted independently by Klein Research on behalf of Local Government Victoria and Murrindindi Shire Council. The results help Council understand what is working well and where we can improve the services and facilities we provide to our community.

Participants are randomly selected and must be aged 18 or over and live within Murrindindi Shire. The survey is conducted annually and follows strict research standards.

For more details visit murrindindi.vic.gov.au/satisfactionsurvey

Community Capacity Building Program

Council's Community Capacity Building Program supports businesses, volunteers and community members across Murrindindi Shire through a dedicated training and development program.

Some events scheduled earlier this year were postponed and will recommence in April and there are more being added regularly.

Visit murrindindi.vic.gov.au/ccbp to stay up to date with upcoming events.

Fire Inquiry Extension Granted

Council has welcomed a decision by the Victorian Parliament's Environment and Planning Committee to extend the reporting deadline and submission period for the Inquiry into the 2026 Summer Fires across Victoria.

For details, visit murrindindi.vic.gov.au/fireinquiryextension

Get in touch
5772 0333

murrindindi.vic.gov.au/request
customer@murrindindi.vic.gov.au

Stay informed

murrindindi.vic.gov.au/news
Follow us on Facebook @murrindindishirecouncil

Will The Focus Ever Shift Away From Inflation?

The property market is entering a more cautious phase as economic uncertainty grows and interest rate expectations shift again.

While activity remains steady, buyers are becoming more measured in their decision-making as inflation pressures and potential rate rises dominate the national conversation. Caution is the watchword once again.

The Reserve Bank recently lifted the cash rate to **3.85%**, the first increase in more than 2 years, and financial markets are now pricing in a **2/3 chance of another rise to 4.1%** in the coming months.

Inflation remains the key driver. Headline inflation is sitting around **3.8%** and underlying inflation around **3.4%**, both above target.

One of the biggest risks now is rising global energy prices. Ongoing tensions in the Middle East have pushed oil prices above **US\$100 a barrel**, lifting petrol prices in Australia above **\$2 per litre (diesel**

currently \$2.70). This flow-on effect raises costs for freight, food production and travel, which can quickly feed back into everyday inflation.

Up until this point, the domestic economy has remained relatively strong. Household incomes grew almost **7%** last year, unemployment remains low at around **4.1%**, and consumer spending has been fairly resilient. While this strength is positive overall, it also means demand in the economy is still running ahead of supply which is a key reason the RBA is considering further tightening.

In the property market, this environment is beginning to influence buyer behaviour. Clearance rates have softened nationally, falling to around **66%**, as higher interest rates and cost-of-living pressures weigh on sentiment. We're also seeing slightly fewer active bidders and lower open home attendance in some markets, which is becoming the norm.

The property market will rely heavily upon population growth to add pressure to a limited housing supply, but this may not be enough for more established areas as opposed to the greenfield areas. In contrast to this, the rental market remains extremely tight.

Another issue gaining attention is potential **tax reform**, particularly around **CGT and negative gearing**.

Economists have suggested reducing the CGT discount could lessen the incentive for investors to negatively gear property, although no policy changes have been confirmed yet. These discussions may form part of the **2026 federal budget debate**, so keep a close eye on it in May.

From a local perspective, we're seeing a market that is uncertain of the global economy. When a war has a real price effect on home turf, buyers feel vulnerable, especially when the media feeds into this negativity.

Buyers will remain price-



sensitive. Well-presented homes that are priced realistically still attract strong interest, while properties that push too far beyond market expectations are taking much longer to sell.

Looking ahead, the key factors to watch will be **inflation data, interest rate decisions, tax reform and housing supply levels**. While short-term volatility is possible, we need to ride this cycle with confidence, have a good strategy and hope time is on our side. This will be more important than ever in the months ahead.

www.integrityrealestate.com.au
Will Verhagen

Jeff and Geordie Find a New Home

As war veterans and their support organisations do, when one of them is in need they banded together from Kinglake to Yea and as far afield as Frankston and central RSL groups.

When Vietnam Vet, Jeff Swain, lost his home and all possessions in the January Longwood fires, he and his best buddy, dog Geordie, were instantly homeless.

He went from his property near Seymour to the Highlands Caravan Park as emergency accommodation as a first step.

Not only did the RSL quickly rally from the local level, but so too did the Middle Kinglake Primary School to ensure he had what he needed.

Vasey RSL Care became aware of his situation and found Jeff a new home at its just-completed affordable housing complex for

ex-service personnel in Bundoora.

Geordie has settled in alongside Jeff.

For Jeff, the loss was confronting and brought back memories of earlier bushfire threats that he'd narrowly escaped.

"Bushfires remind you how quickly everything can change," he said. "One moment you're at home, the next you're starting again".

Most important for Jeff was that he and Geordie are safe and have a secure place to live.

Jeff said this and the broader support he received in the immediate aftermath of the fires has reinforced his belief in the importance of community and the value of organisations that step up when it matters most.

FOR ADVERTISING ENQUIRIES PHONE NEESHA 0493 740 926

The Value of an Offset Account

Who wouldn't want to save on home loan interest and pay off their mortgage faster? Homeowners are increasingly turning to offset accounts to do just that. So let's look into whether an offset account could benefit you.

The recent RBA cash rate hike has led homeowners to embrace a variety of strategies to ease the rate pain, and it turns out one of the most popular options is a home loan offset account.

One of the big 4 banks, NAB, says it is seeing 'offset accounts surge' as homeowners, especially younger borrowers, look for low effort ways to beat rising rates.

According to NAB, three-quarters of its home loan customers now use an offset account.

While homeowners aged 40 to 60 remain the biggest users of offset accounts, NAB says that among customers aged under 35, the number of offset accounts linked to new home loans has nearly doubled compared to last year.

Let's dive in to understand the appeal of offsets, the potential savings to be made, and who home loan offset accounts may be suited to.

How an offset account can save on loan interest

A bit of background first.

An offset account is an everyday account linked to your home loan.

You don't earn interest on money in the offset account. Instead, you save by paying less interest on your home loan.

That's because the balance of the offset account is deducted from (or 'offset' against) the value of your home loan when loan interest is calculated.

For example, if you have a \$500,000 mortgage balance and \$20,000 in an offset account, you'll only be charged interest on \$480,000.

Your monthly home loan repayment amount will stay the same – it's just that more of your monthly repayment will go towards paying off the principal, rather than towards interest.

When this pattern is repeated month after month, the savings can potentially start to stack up.

Over time the balance of your home loan may be paid off quicker, which further helps to lower the monthly interest charge.

In this way, an offset account has the potential to be a way to pay off your loan sooner.

How much could I save with an offset account?

The interest savings generated by an offset account will depend on the size of your home loan, the balance of the offset account, and your loan rate.

Here's an example of the possible savings that we've put together using one bank's offset calculator (most banks have them readily accessible online, just google 'offset account calculator').

Let's say you have a \$500,000 mortgage with a 30-year term and an interest rate of 5.99% (comparison rate of 6.37%), plus \$20,000 always sitting in your linked offset account.

Over the life of the loan, the impact of the offset account could cut \$90,571 off your total interest bill and see you mortgage-free 2.5 years ahead of schedule.

What matters is that you talk to us to know exactly how much you could save with an offset account.

Who is an offset account well-suited to?

There's a lot to love about home loan offset accounts.

But they may not be the ideal option for every borrower.

The more you have in an offset account, the greater the savings on loan interest.



So, you need to be able to resist the urge to dip into the account too often – especially as the funds are usually available at call.

One way around this is to look for a lender that offers multiple offset accounts linked to the same home loan. This way, you can use one offset account for everyday money, and the others to save for personal goals – all while saving on home loan interest.

The other aspect to consider is that offset home loans can come with higher rates and fees.

If you have only limited cash savings, you may save more with a lower rate without features such as offset accounts.

Lastly, it's always worth weighing up whether any money you allocate towards your offset account and paying off your home loan sooner could be better utilised by investing towards your future in other ways.

Refinancing – another way to save on interest

Offset accounts can be one interest savings hack. But you can't simply add them to every home loan account – adding them can often mean refinancing.

Fortunately, you could potentially double up on cutting the amount of interest you're paying by refinancing to a lower rate home loan at the same time.

The main point is that you don't have to just wear a higher interest rate.

Call us to find out if an offset account is a good fit for you – and other strategies that could potentially help you save on home loan interest.

*Nicole Sevenich, 0412 169 035
NS Finance & Mortgages
Credit Rep Number 479851*

ANZAC Day dawn service Kinglake Community 25 April starting at 0530

Held at St Peters WW1 Memorial Church
All welcome, followed by gunfire breakfast
Mark Hildebrand for enquiries, mhilde@live.com.au

ANZAC DAY Service 10 am

At the War Memorial outside the Kinglake Community Centre.

All are welcome to participate.

This service is again being coordinated by the Lions club of Kinglake and the Kinglake historical Society.

Contact Ken Aitken 0427331977



Apr 8

Alexandra Speedway Planning Meeting for Kings Birthday Weekend

Apr 22

Guest Speaker Night
Nillumbik Dementia Friendly Alliance

Apr 22

Jelly Bean Day



RYPEN Is In Your Future

RYPEN (Rotary Youth Program of Enrichment) is on 24th - 26th of April in Axedale. An awesome leadership camp for 14-17-year-olds who have potential but just need a boost to shine. It's all about meeting new people, having fun, and building confidence through team challenges, inspiring talks, and cool activities, helping you grow, stronger, speak up, and believe in what you can do! You will be sponsored by your local rotary club. **Get in touch with us to find out more and register for 2027!** Follow the link for further information:



Defensive Driving - Now Full!

Dive into a day of skill enhancement with the Young Driver Development Program, brought to you by the Kinglake Ranges Rotary Club! Each year, our club sponsors young drivers from across the Kinglake Ranges & Surrounds to complete the Murrcott's Defensive Driving Course. **Follow the QR Code to register your interest on the waiting list for 2027!**



Alexandra Speedway - Kings Birthday Weekend Barbecue

We will be gearing up again to get everyone fed at the Alexandra Speedway on Kings Birthday weekend. We need volunteers from our local community to keep it running smoothly! Please get in contact with us if you would like to put your hands to work. You do not need to be on the clock the whole time, even if you can help us for a morning or an afternoon, anything is appreciated and you get free entry in to the event for the day! If you would like to find out more before you commit, come along to our project planning night and have dinner with us on April 8th, 6:00 at the Kinglake Pub.



Do you have a project?

Have a great idea for a project that could make a difference in our community - or even somewhere across the globe? We'd love to hear it! Kinglake Ranges Rotary welcomes local community members to share their ideas with us. Maybe you've always wanted to start a local initiative, support a charity, improve a community space, run a fundraiser, or help people in need here or overseas. If there's something you've always wanted to get off the ground but weren't sure where to start, come and pitch it to us. Rotary is all about turning good ideas into meaningful action, and with the right people behind it, your idea could become something truly impactful.



Guest Speaker - April

Each month we are delighted to host guest speakers from different charities, businesses and organisations and everyone in our community is welcome to join us on the night. For April, we will be joined by **Nillumbik Dementia Friendly Alliance (NDFA)** and hear about the change they're making. They are a group of committed and friendly people that come together monthly to work on actions to make Nillumbik dementia-friendly. The alliance includes, people living with dementia, carers, service providers, Council representatives and general community members. Join us on April 22nd, at 6:00pm in Lawson's Function room at the Kinglake Pub. RSVP to 0408 525 760.



10AM - 2PM

BOOK A STALL!



DATES FOR 2026

FEB 22 MAR 22 APR 26 MAY 24 JUN 28
JUL 26 AUG 23 SEP 27 OCT 25 NOV 22
DEC 20

WE'RE LOOKING FOR BUSKERS & VOLUNTEERS FOR PARKING FOR 2026

kinglakemarket@gmail.com

0457 481 980

Kinglake Community Centre - 1 Extons Rd. Kinglake Central

OUR APRIL GATES WILL BE GOING TOWARDS ...

Nillumbik Dementia Friendly Alliance (NDFA)



WHITTLESEA COMMUNITY HOUSE

P: 9716 3361 W: www.wchi.com.au E: wchi@whittleseach.com.au

Happy Autumn Everyone!
As the weather turns there's still lots of classes and plenty of activities to keep you interested, the current program can be picked up from the office or jump online www.wchi.com.au to check out what's happening and to book online.

Visy Recycling

NEW OPENING HOURS! Our merry band of volunteers is still counting CANS AND BOTTLES. Over the counter recycling is available TUESDAY, Wednesday and Thursday each week 10am – 3pm and Saturdays from 8am – 4pm. Please note we are not open on Public Holidays. Unfortunately, we must also close when we reach our bin capacity – it's a good idea to

visit us as early in the day as you can.

Got some time on your hands and looking for an easy and regular volunteering role (perhaps to meet your Centrelink obligations). Look no further. Our recycling team is seeking volunteers for regular shifts call 9716 3361 to discuss.

Are you a group or club? Did you know that you can register as a donation partner and receive the 10 cent return on recyclable items as a donation from the community? Go to <https://cdsvic.org.au/donation-partner-registration>

Community Meals

Big Blokes Brunch can be found at the Whittlesea Community Activity Centre on Tuesdays. Join the blokes

for brunch each week (even during School Holidays):

Tuesdays 11.00am – Noon
\$2.00 per person

*Please note that Big Blokes will be cancelled on high fire risk days – please contact the office to confirm. 9716 3361

Women's Lunch

April 9 and 23 11.30am – 1.00pm Gold Coin Donation

Highlights for Autumn

- First Aid – 13 May CPR \$85, Provide First Aid \$150
- Paint and Sip returns with a new tutor – Saturday 30 May - \$30 per person

Fix it Friday – Friday 24 April

Fix it Friday is BACK. Get real help from a real person and sleep better at night. Talk to us about problems that relate

to legal matters, housing, finance, NDIS, My Aged Care, Centrelink, Fines, Mental Health as well as No Interest Loans and Police matters. The Victorian Ombudsman is also in attendance for all complaint matters related to government entities (eg councils, state government, Fines Victoria, VicRoads, Worksafe). We also have free Barista made coffee to keep you fuelled up.

Call us to register for assistance 9716 3361. Pop in during open hours for a cuppa Mon – Thurs 10am – 3pm. Food relief pantry packs are available during office hours or visit our community pantry 7 days a week open all hours (out the front of the House – 92A Church St). Pet food relief is also available for dogs and cats during office hours.



Kinglake CWA The Country Women's Association of Victoria Inc.

Current major project

Our members continue to volunteer at Kinglake Ranges Neighbourhood House Foodshare each Wednesday. This is so critical for people doing it hard, whether through lack of employment, family issues or just general cost of living pressures.

In addition, there are wonderful people in our community who add to our own CWA fundraising by donating to our capacity to purchase basic foodstuffs and necessities. To them, the biggest thank you for caring for the people who really rely on this to

supplement their pantry supplies.

If you have a couple of hours on a Wednesday afternoon, and can spare just one afternoon a month, we would love to have a few more volunteers join us. The satisfaction gained from helping those doing it tough is immense. You don't have to join CWA – just contact us and we will put you in touch with the right people.

Mother's Day Stall

Watch out for some special Mother's Day presents at realistic prices when you are around the township the first week of May. Not only will our prize winning raspberry jam be on sale but also some beautifully crafted articles, ideal for Mums of all ages.

As always all funds raised are put back into our local community and we can only say thank you for supporting our efforts.

*The team at Kinglake CWA, Email kinglakecwa@gmail.com
Or check out our Facebook page Kinglake CWA*



Impartial, independent
advisors & analysts
since 1964

Yarra Valley Valuations
Incorporating Geoffrey Pope & Associates

Valuations for:

- Family Settlements
- Before you Buy/Sell
- Mortgage and Refinancing
- House Insurance Valuations
- Rating and Taxation Dispute
- Capital Gains Tax / Stamp Duty
- Depreciation Schedules
- Probate and Estate Valuations

Your post-fire property experts, Experience and knowledge!

P.O. Box 121
Seville 3139
Ph: 5961 9176
admin@yv.com.au
www.yv.com.au

Contact
NEESH MARKETING SOLUTIONS
Small business specialist in websites and social media

NEESHA SINCLAIR

www.neeshmarketingsolutions.com.au
neeshmarketingsolutions@gmail.com

FOLLOW ME



**Kinglake Ranges
Neighbourhood House**
6 McMahons Rd. Kinglake



WHAT'S ON @ THE HOUSE IN APRIL

NEW TERM 2 PROGRAM

Our Term 2 Program will be available from mid-April. The Program outlines the core classes, courses and key services available at the Neighbourhood House. You can visit our website to enrol and pay for any Term 2 classes or courses. Our website and Facebook Page are regularly updated with pop-up workshops and special events, so be sure to keep an eye out.

THE NOOK

Things are really starting to take shape at the Kinglake Ranges Op Shop – The Nook!

We've refreshed our stock and are now offering more of what you asked for – including kids' toys, camping gear, gym and fitness wear, and kids' dress-ups.

Our new stands are filling up with some wonderful donations from community members, and there are always new bargains to discover.

FOODSHARE

We are currently seeking **volunteers** to support our **Foodshare Program** at the Neighbourhood House.

Foodshare runs every Wednesday from 1.00pm-3.00pm and provides a confidential service for anyone experiencing food insecurity or needing a little extra support.

While the program runs weekly, volunteers are only needed once or twice a month.

If you have a few hours to spare and would like to make a real difference in our community, we would love to hear from you.

HOUSE ACTIVITIES

FIBRE FRIENDS

Second & fourth Tuesdays of each month | 10am-1pm
\$3.00 per Session.

CLAY CLUB

Tuesdays 21 April - 16 June | 6.30pm-8.30pm
\$140.00 Term 2 (9 Sessions) OR \$15.00 Casual Session

LEADLIGHTING

Morning Session

Mondays 27 April - 22 June. 10am-12pm
\$120.00 Beginners. Includes materials.
\$95.00 Advanced. BYO material

No Classes on Monday 8 June (King's Birthday Public Hol.)

LEADLIGHTING

Evening Session

Mondays 27 April - 22 June. 7pm-9pm
Prices as above.



Contact us:
03 5786 1301 | 0482 847 764



More information/enrolments:
www.KRNH.org

Our Heritage

The 'New' Kinglake Post Office

KHS is pleased to announce the official opening of our restored Kinglake Post Office on Saturday 17 May 2026, 1:30 to 4pm at the Kinglake Heritage Centre.

This building, dating from 1914 is now 112 years old, and has had a very interesting history - in fact, a charmed life, having three times escaped being burnt down when buildings beside it were destroyed. Its other claim to fame - it was arguably the smallest PO in Australia!

The first postal service for Kinglake was set up in 1883 at the home of Edward Staff on Mount Slide Road. When he left the district in 1890, the 'post office' was transferred to 'The Oaks', the home of Harry and Elizabeth Thomson. In 1895, the Thomson family left that property, bought land nearby (now the site of the present Kinglake hotel) and built their home, 'Aurelia Villa', which they operated as a guesthouse for some years. Harry added an extra building on the east side for the Kinglake post office.

In 1908, Harry was granted a

Opening of Restored 1914 Kinglake Post Office

Sunday 17 May 1.30 – 4pm
at Kinglake Heritage Centre

Come along to see the 'new look' PO and hear its interesting history



The little building was no longer required and was likely to be demolished. However, the Kinglake Neighbourhood House and the Kinglake Historical Society managed to have it saved from demolition and removed to the grounds of the Neighbourhood House for safekeeping. In the 2009 fires, the little building escaped destruction again.

In 2023, the post office building, looking a little the worse for wear by this time, was removed to its present site beside the Kinglake Heritage Centre at Kinglake West. It has now been restored and we look forward to 'unveiling' it and explaining its interesting history to visitors on Saturday 17 May. We hope you'll be there.

*Deidre Hawkins
Kinglake Historical Society
kinglakehistoricalsociety@gmail.com*

Wayside Inn licence to set up a hotel but the post office could not be operated in the same building so a new post office was erected on the west side of the Thomson home.

In 1914, Harry Thomson retired from the hotel business and built a home, 'La Mascotte', close to the hotel.

This required yet another new post office building beside the house on a slightly different site and this post office served the Kinglake township until 1991 when the postal service was transferred to a shopfront in the main street. In 1992, 'La Mascotte' caught fire and burnt down but the old post office building survived.

Kinglake Heritage Centre

Kinglake West Reserve ~ Open Sundays 12 noon – 4pm
\$2 donation appreciated ~ 150 Years of Kinglake Stories
Groups weekdays by appointment – phone 0414 255 893

Autumn dryness and the Lungs

In Traditional Chinese Medicine (that includes all east Asian medical theory and practice) Autumn is the time of Lungs and Large Intestine as these two organs are strongly affected by extended dryness at the end of summer.

Leaves on trees (that are deciduous) begin to turn colour and dry ready to drop, wheat has reached the end of its cycle ready to make hay for winter food for livestock, and we harvest fruits that are good for this particularly dry time.

This why understanding and eating seasonally is not only better for you, but also cheaper and readily available.

It's no accident that the fruits and foods that are ripe and ready to eat are foods that are particularly good for both the lungs and large Intestine. These include loquats, juicy pears and Nashi pears, apples, rhubarb, plums, kiwi fruit, bananas, watermelon and avocados. But why these organs? It's because they are most sensitive to the effects of dryness - the lungs are delicate sponges that detest being too dry (or too wet as those with weak lungs know well); dry coughs are very common in autumn, many who have asthma may find their symptoms that have been latent become triggered.

The large intestine is also very affected by the dryness and constipation can be exacerbated in autumn and the very foods that help are ripening now.

Stewed plums are wonderful, as are stewed apple and rhubarb a treat and are so delicious! Kiwi fruits also moisten the bowels and contain a big hit of Vitamin C to prepare you for the winter.

Pawpaw needs to be in your diet if you have sluggish bowels, also in season now, just a couple of spoons a day in the morning with brekky gives valuable digestive enzymes essential for protein digestion. If you have 'fussy kids' just mash



a little Pawpaw into yoghurt and it really picks up the appetite, then serve with stewed plums (add some brown sugar and cinnamon when stewing and only cook until tender) YUM!

Dry coughs at this time of year respond very well to pears, loquats and nashi's as they are said to moisten the lungs and help clear sticky phlegm. Honey is also at its peak in Autumn so keep an eye out for local farmed honey that not only assist with dryness for bowels and the lungs but also contain local enzymes and pollen from local flowers boosting your immune systems resilience to coughs and allergies.

A fantastic easy to make cough syrup recipe is as follows. Keep this in your recipe book!

Stay well, eat fresh and local when you can

Dr Angela Palmer, Kinglake Chinese Medicine

HOME COUGH SYRUP

- 2 cored pears skin on cut in quarters (any kind but nashi's are great)
- 1 dried mandarin or tangerine peel (organic best, peel and sun dry for a few days or bake in a low oven until dry)
- 2 good slices of fresh ginger
- 1 tablespoon honey
- 1 whole lemon
- 3 cups water

Put pear and peel in a small pot, bring to boil then simmer adding ginger. Reduce by half.

Add halved whole lemon squeezed in to put and honey. Mix well turn off and let cool. Can store in a jar for a month in the fridge and take as often as required. Or you can grab some NIM JOM (the worlds favourite natural cough syrup) to have on hand.

GOT PAIN? BOOK AN APPOINTMENT TODAY

0458 112 608

www.innovaosteopathy.com.au

LOCATED WITHIN HILLTOP FITNESS
LEVEL 1, 33 JORGENSEN
PDE, KINGLAKE WEST

 **Innova Osteopathy**
Dr Nikola White BHSce / BAppSc (Osteopathy)

Samantha Heyfron B Physio, APAM
Adam White B Physio, APAM
Tanvi Tiwari B Physio, MSc MSK Rehab
Luke McMurray B Physio, B Appsc, APAM
Maighan Cann B Appsc, M Physio Prac
Claire Barbosa B Physio
Jackson Eltzink BSc (Physio) Hons
Kosta Gessas BExSc, MPT

COMPLETE CONCUSSIONS

**Whittlesea
PHYSIOTHERAPY
and Clinical Pilates**

73 Church Street, Whittlesea Victoria 3757
☎ 03 9716 2250 Fax: 03 9716 2275
info@whittleseaphysiotherapy.com.au

RADSKILL IMAGING GROUP



**NOW AT 2 LOCATIONS FOR YOUR CONVENIENCE
KILMORE & WHITTLESEA**

The well-being of our clients is our priority

Radiologist on site • All referrals accepted • Walk ins welcomed

Our services include: **MRI coming soon to Kilmore**

- All general, dental and chiropractic X-rays.
- All general ultrasounds, pregnancy ultrasound, MSK (musculoskeletal ultrasound) and doppler ultrasound (leg arteries).
- CT scans both contrast and non contrast of any body part.
- CT angiogram with guarantee report within hours.
- Bone densitometry for osteoporosis screening.
- Cortisone joint injections.



www.radskillimaging.com.au | E: info@radskillimaging.com.au

KILMORE MEDICAL IMAGING
Phone 5781 0033 | Fax 5781 0044
107 Powlett Street, Kilmore
Open Monday – Friday 9am – 5pm

WHITTLESEA MEDICAL IMAGING
Phone 9716 0278 | Fax 9716 0273
2-3/81 Church Street, Whittlesea
Open Monday – Friday 9am – 6pm
Saturday 10am – 4pm



Phone for appointment

Ph. **0404 092 927**

52 Watsons Road, Pheasant Creek.



CARE FOR LIVING
Pty.Ltd.



**We offer NDIS
supports and
services**

Our managers are available
to assist with any queries at:

Adrian: 0402 095 585
Sarah: 0419 116 217

admin@careforliving.com.au

www.careforliving.com.au



**KINGLAKE
CHINESE
MEDICINE**

& NATURAL HEALTH CENTRE

You will find us just behind the United Service Station
1 Robertson Rd Kinglake

KCM STUDIO SESSIONS

Yoga – Wednesday 7pm -8pm \$35 per class
(\$30 concession), discounts for booking a
4-week blocks (\$125 Full, \$105 conc)

Qigong w/ Dr Chrys – Thursdays 6pm to 7pm
- \$40 per class (\$35 concession), discounts for
booking a 6-week block (\$200 Full, \$180 conc)

COMING in APRIL

Monday night MEDITATION at 7pm.
NO Booking required!! \$10

Dr Angela Palmer TCM B.ApSc B.TCM AHPRA reg.
5786 1889 www.kinglakechinesemedicine.com.au

• Work cover Approved/Private Health Fund Approved



**KINGLAKE
PHARMACY**

3/1 VICTORIA RD, KINGLAKE

P 5786 1109

F 5786 1049



MONDAY - FRIDAY 9AM - 5:30PM
SATURDAY 9AM - 12:30PM

What Is Dry Needling?

Dry needling is a technique used by trained Physiotherapists to help reduce pain and improve muscle function. Dry needling is based on Western Medicine principals and has proven an effective method for releasing taut muscles and eliminating the myofascial trigger points.

It involves inserting very fine, sterile, single use needles into specific points in the muscle known as trigger points—tight, sensitive bands of muscle that can cause pain locally or refer pain elsewhere.

When performed by a qualified Physiotherapist, dry needling is a safe and effective treatment. We use:

- Single use, sterile needles
- Clean, controlled techniques
- Thorough screening to ensure it's appropriate for you

Your physiotherapist will discuss any risks and answer your questions before starting treatment.

What Conditions Can It Help?

Dry needling can be beneficial for a wide range of musculoskeletal issues, including:

- Neck and shoulder tension
- Lower back pain
- Headaches and migraines
- Sports injuries
- Postural-related pain

It's often used alongside other physiotherapy treatments such as exercise therapy, manual therapy, and education.

What Does It Feel Like?

Most people describe the sensation as:

- A mild prick as the needle enters
- A deep ache or twitch in the muscle
- A sense of release or relaxation afterward

Some temporary soreness can occur for 24–48 hours, similar to how you might feel after a good workout.

What to Expect After a Session

After treatment, you may experience:



- Mild muscle soreness
- A feeling of looseness or improved movement
- Reduced pain
- Better muscle activation

Staying hydrated, gentle movement, and applying heat can help ease any post treatment soreness.

Interested in Trying Dry Needling?

If you're curious about whether dry needling could help with your pain or mobility, chat with your physiotherapist at your next appointment. We're here to guide you through your options and tailor a treatment plan that suits your goals.

Supporting Recovery: The Role of the Lymphatic System

When we think about recovery from illness, injury or physical strain, we often focus on rest, hydration and nutrition.

However, we often overlook an important system that plays a key role in how the body heals and restores balance — the lymphatic system.

The lymphatic system is part of both the immune and circulatory systems and acts as a fluid transport network throughout the body. Within this network, lymph vessels carry lymph fluid, which contains immune cells responsible for identifying and fighting bacteria, viruses and other harmful substances.

Lymph nodes are positioned throughout the body to act as filters, helping remove waste products and pathogens from this fluid.

The lymphatic system does more than assist our immune system, it also helps maintain healthy tissues by collecting excess fluid, waste products and inflammatory by-products from the spaces around our cells. These substances are then transported through the lymphatic vessels so they can be processed and

removed by the body.

This process plays an important role in supporting the body's natural recovery and healing mechanisms.

How movement helps the lymphatic system?

Unlike the cardiovascular system, which has the heart to pump blood around the body, the lymphatic system does not have a central pump. Instead, it relies heavily on movement to circulate lymph fluid.

When muscles contract - even during everyday activities such as walking, stretching or even deep breathing, they help to gently compress lymphatic vessels. This action acts like a pump, encouraging lymph fluid to move throughout the body. As lymph circulates, immune cells are transported to areas where they are needed and waste products can be cleared more efficiently.

When movement is reduced — whether due to illness, fatigue, injury or prolonged rest — lymph flow can slow. This may contribute to feelings of stiffness, heaviness or lingering aches as the body works to recover.



Innova Osteopathy

Movement and recovery

While rest is an important part of healing, gentle movement can also support the body's recovery processes. Activities such as light stretching, walking or breathing exercises can help stimulate lymphatic circulation and assist the body in clearing inflammatory waste products, facilitating the body's natural healing mechanisms.

From an Osteopathic perspective, treatment may also focus on improving mobility and encouraging healthy circulation throughout the body. By supporting movement and addressing areas of restriction, Osteopathic care aims to assist the body's ability to recover and restore balance.

If you are experiencing lingering aches, stiffness or discomfort following illness or injury; or to learn more about how Osteopathy may assist your body's natural healing process, visit our website: www.innovaosteopathy.com.au or contact us on 0458 112 608.

Dr Nikola White, BHSc / BAppSc (Osteopath)

FOR ADVERTISING ENQUIRIES PHONE NEESHA 0493 740 926

ACCENT ON TANK CLEANING



*Have you had your
water tank cleaned
in the last 3 years?*

NO!

HAVE YOU CONSIDERED THE HEALTH RISKS TO YOUR FAMILY?

*The build up of sludge, decaying leaves,
animals or animal matter, which if left
may cause harmful bacteria, leading to
salmonella, legionella or gastric problems.*

**Water Tank Cleaning,
Vacuuming and Repair Service
with minimal water loss.**

HOWARD

0407 684 910

CALL FOR A FREE QUOTE NOW

ACTION FIREWOOD



REDGUM

Call/Text Mitch

0448 583 861

Free delivery to the Kinglake area

Open Community Meeting

From 5.00 pm on Wednesday 29 April
at Kinglake Ranges Neighbourhood House

Would you like to speak to Council about topics or issues that affect you and your community?

We are hosting an Open Community Meeting in Kinglake from 5.00 - 7.00 pm on Wednesday 29 April 2026 at the Kinglake Ranges Neighbourhood House, 6 McMahon's Road, Kinglake.

You will have five minutes allocated to talk directly with Murrindindi Shire Councillors about issues or ideas that are important to you and your community, and you may be speaking in front of members of the public, as well as Council officers.

If you, or your community group, would like to speak to Council, you are invited to attend the meeting. Prior registration if not required, we'll greet you and collect your details on the evening.

For more information, email governance@murrindindi.vic.gov.au or call Council on (03) 5772 0333.



Stock Water After Fire

As outlined by the Shire of Murrindindi's Economic Impact statement, the recovery our farmers are facing is significant and along with feed, a reliable supply of good quality water is essential for stock retained on affected properties.

Clem Sturmfels, Land Management Extension Officer with Agriculture Victoria, says water is critical to avoiding health issues, maintaining production and meeting animal welfare needs.

Unfortunately, water tanks, pipes, troughs, and pumps have been destroyed or damaged due to the fires. Even where this infrastructure is still operational, if larger numbers of stock are confined to a small area of the farm, it can result in inadequate water supply.

At this time of year beef cattle can consume up to 100 litres a day and sheep up to 10 litres a day, with lactating animals requiring even more. At these rates, a semi-trailer load of water would be needed every 6-7 days for 50 cattle or 500 sheep.

While meeting daily water demand is essential, requirement, it is equally important to ensure trough flow rates are adequate. Low flow rates can lead to health and welfare problems, increased competition at troughs and damage to water infrastructure or surrounding fencing.

Mr Sturmfels says that under normal conditions, livestock should be able to access their full daily water requirement within a four-hour period. This helps manage peak demand, reduce competition, and support dry matter intake.

For 50 cattle or 500 sheep, this equates to a required trough flow rate of 21 litres a minute. In emergency situations, a lower flow rate may be acceptable provided animals can still access enough water and are monitored daily.

A typical emergency supply might involve a tank, a 100m length of 2-inch polyethylene pipe and a trough. To achieve a flow rate of 21 litres a minute, a minimum 2m head of water would be required.

This could be achieved by maintaining a base volume of 2m of water or by raising the tank up on a mound of well compacted soil.

When setting up an emergency water supply consider:



- raising your tank on a compacted soil mound to increase trough flow rate
- using appropriate fittings that allow quick and easy tanker connection
- choosing high quality, brand name, pipe, and fittings for durability
- using a trough designed for easy cleaning
- place troughs to ensure good drainage (e.g. on a raised mound)
- ensure trough height suits all classes of stock
- ensuring adequate trough length of 4m for stock numbers described above
- installing tanks, troughs, pipes, and fittings in a way that minimises the risk of stock injury.

For more on fire recovery support and information, visit www.agriculture.vic.gov.au/bushfires or call 136 186.

Protect your dam with a burnt netting

Fire damaged netting and steel posts can also be repurposed to become a valuable resource to construct sediment traps after a bushfire.

Sediment traps are commonly installed following bushfires to protect dams, roads, tracks, stream crossings and a range of environmental assets from fire debris and sediment that can be washed downstream after heavy rain.

Issues like soil erosion, landslides and the movement of ash, soil, organic matter and woody debris are a common occurrence following rain events in bushfire affected hilly terrain.

Sediment traps can be easily constructed

from fire damaged netting and steel posts by simply building a fence across your main drainage lines to slow water flow and capture sediment.

The length of the fence will depend on the size of the catchment and availability of suitable materials.

Unlike a normal fence, which is usually straight, a netting fence sediment trap needs to follow the contour of the land. This allows the water to move in both directions away from the drainage line. The path of the netting fence sediment trap should follow a level line, along a contour, somewhat similar to a sheep or cattle track around a hill.

To prevent water from running around the ends, turn both ends of the fence slightly uphill. The netting needs to have good contact with ground and should be supported with steel posts spaced 1 to 2 metres apart to keep it secure in heavy flows.

The netting fence sediment trap works by slowing and filtering the water resulting in material being trapped against the fence but also depositing sediment upstream.

Regular removal of debris and sediment will prolong the life of the structure.

For information on how to construct a sediment trap visit <https://agriculture.vic.gov.au/farm->

[management/water/managing-dams/Building-a-sediment-fence-to-protect-your-dam](https://agriculture.vic.gov.au/farm-management/water/managing-dams/Building-a-sediment-fence-to-protect-your-dam)

For more on fire recovery support and information, visit www.agriculture.vic.gov.au/bushfires or call 136 186.



AUTUMN

Kinglake district is the traditional land of the Taungurung and Wurundjeri people of the Kulin Nation which in April transitions into Waring or Wombat season until July. Shorter days, longer nights, misty mornings, and cooler.

COMING UP

National Tree Day in July. Other activities advised by email or on our website.

ACTIVITIES JUST GONE OR CONTINUING

A great turnout of active volunteers at our

Kinglake LANDCARE

regular Clean Up Australia Day at Wallaby Springs Reserve, Kinglake West on 1 March. A popular visitor spot but spoilt by rubbish dumpers.

Among rubbish collected were gas bottles, a motor mower, wheels and tyres, and the plastic/aluminium coatings of possibly stolen copper cables.

Bushfires eased by March assisted by some good rains. However, the widespread damage is still being tackled.

Upper Goulburn Landcare Network (UGLN) has been rolling out its new team Fencers Without Boundaries (see photo). Kinglake Landcare Group (KLG) is an integral part of UGLN which is working with affected landcarers on rehabilitation of natural assets in the affected area of Upper Goulburn such as restoration of fencing for control of stock and protection of crops and the regeneration of their local trees, shrubs, grasses, and ground flora essential for fodder, habitat, shade, windbreaks, stopping soil erosion etc.

UGLN is actively seeking volunteers and donations to assist landowners impacted by the 2026 Longwood Fires in the Murrindindi and Mansfield Shires and is calling out for skilled and unskilled volunteers to assist with Fencers Without Boundaries.

Fencing experience would be helpful but not essential as a lot of the initial work is removing the burnt and damaged fencing.

Monetary donations to help UGLN continue this important work can be made to the following account and reference 'Fires 2026'. Account Name: Upper Goulburn Landcare Network BSB: 633 000 Account No: 146 003 595. For more information contact Chris Cobern on 0413 855 490 or by email ugln.projects@ugln.net

As climate change amplifies the weather extremes we must develop even better responses to bushfire threats.

Good property planning, building and maintenance for fire protection including ►





escape routes and dedicated fire water storage in our plans. Of course, taking all actions to stop the world continuing to develop, burn fossil fuels causing the already clear evidence of increasing climate change and volatility.

By electrification of our homes (solar/batteries, heat pumps etc) and vehicles we can personally take climate action and reduce some of the effects of being so fossil fuel dependent.

GET OUR FREE BOOKLET

'Caring for Your Patch' covering backyard garden design, food growing, plant selection, weed and pest animal management and more available locally.

MEMBERSHIP BENEFITS

Contact our website kinglakelandcare.org for membership details for \$16 per year or be added to our free 'friends' mailing list for notification of events.

NEXT MEETING

7.30pm Monday 20th April upstairs at Kinglake Memorial Reserve Hall. All welcome. More books to give away.

NEXT EVENTS

Sunday 26 July National Tree Day.

*Roger Cook,
President
Kinglake Landcare Group*

Beware of Weeds in Interstate Fodder

Recent bushfires and the drought has seen a great deal of fodder donated from interstate, but farmers are being urged to watch out for weeds growing from seeds contained in hay, particularly the State prohibited weed parthenium weed.

Agriculture Victoria Biosecurity Manager, Angela Constantine, said biosecurity threats like parthenium weed or Parthenium hysterophorus can add pressure to already stressed systems.

Parthenium is one of the world's most aggressive weeds and a continuing threat to Victoria.

It isn't currently found in Victoria, but is present in New South Wales and Queensland, so the potential for it to invade Victoria is real.

"Parthenium weed has several undesirable characteristics, not only is it difficult to control due to the large number of seeds produced by the plant's fast reproductive

cycle, but it's also toxic to livestock, inhibits other plant growth and can cause severe allergic reactions in humans", Ms Constantine said.

Farmers are being asked to look out for the weed germinating in areas where imported fodder has been used.

It can grow up to 2 metres tall, has deeply lobed leaves in a rosette and on the stem, with small white flowers up to one centimetre wide at the end of each branching stem. It can turn woody with age.

"Where possible feeding livestock in a contained area is an effective biosecurity practice to reduce the spread of weed seed across a property, but you should also monitor this area regularly.

"We encourage farmers to be particularly mindful when importing fodder from NSW and Queensland".

Parthenium weed is most commonly

spread by vehicles and farm machinery, so roadsides and farmland are at risk of invasion.

More information about identifying and reporting parthenium weed is available on the Agriculture Victoria website at <https://go.vic.gov.au/455DEUs> If you think you have seen parthenium weed email weed.spotters@agriculture.vic.gov.au or call the Customer Service Centre on 136 186. Agriculture Victoria will remove all plants, for free.

A permit to import interstate fodder is required for fodder sourced from all states and territories (excluding Northern Territory and Tasmania). Entry conditions are available on the website at <https://go.vic.gov.au/4bUbK2l> or contact market.access@agriculture.vic.gov.au if you need assistance.

Find more information about support for drought or fire recovery at www.agriculture.vic.gov.au or call 136 186.



This being mid-Autumn, there are quite a few jobs to organise and prepare for the seasons ahead. Pests also need attention and soils will need renewing.

This is the final time to complete pruning any stone fruits you have, whether they be apricots or plums. If you are not able to do so this month, then it would be best to leave this task until next year.

These fruit trees flower early, around July onwards and pruning then is better as the sap has stopped flowing. This reduces infections from the cuts as they have a chance to seal up.

Things to do this month

- Mid-Autumn is a good time to sow lawn or repair damaged lawns.
- Sow a green manure to dig in later, around end of May or early June for winter planting of vegie seedlings
- Remove the seed heads of the common light blue agapanthus to prevent seed spreading. The seeds are very easily wind blown and there is the odd sighting of agapanthus along roadsides. These will only further invade the surrounding bushland.
- Some deciduous trees can be pruned now. Silver Birch, Walnut and Maples. These are less likely to bleed and be open to infection.
- Prune perennials as they finish flowering. They can be divided and either replanted or shared.
- This has been a good year for Liliams. If there is overcrowding, the bulbs can be removed and replanted straight away elsewhere.
- Prepare areas for new fruit trees planted bare rooted later and other new shrubs.
- Clay soil can be remediated with 1 to 2 cups Gypsum per square metre.
- Native plants will benefit from pruning now. Some can get quite leggy and pruning for shape will ensure the plant looks its best.
- At the end of April, new strawberry plants can be planted.

Pruning plums

Pruning plums is best done after the fruit is finished. There are two types of plums - Japanese and European. Each has their own set of rules regarding pruning and one type should not override the other. However, even with mistakes they are both very forgiving as I have found out.

Japanese plums carry fruit on the previous year's growth.

European plums carry fruit on tiny pointed spurs on 2 year old wood.

Heavy pruning of Japanese plums should be avoided as it just encourages lots of non productive shoots and this is a reason why they fail to produce fruit. Summer pruning of Japanese plum trees will help produce new wood. No more than half the tree should be pruned. It is important to ensure that the centre of the tree is open to ventilation and this should be the first thing to do.



European plums need a light prune only. They can be quite large trees and this can make it difficult to trim the tops. It may be useful to plant a dwarf European plum that is more accessible. The main pruning job is to remove dead branches and any that look diseased. Like other fruit trees, the ingrowing branches should be removed. This can be done while the tree is active, not deciduous which is best done before the fruit forms after flowering.

Common European plums are King Billy, Green Gage, Sugar Plum, President and Prune d'Argen.

Common Japanese plums are Mariposa, Satsuma, and Santa Rosa.

Many dwarf form types are now available in most nurseries as well as online nurseries which are worth looking at for other varieties.

When pruning, ensure you sterilise your pruning tools after each tree. The quickest method is to either wipe blades with 70% isopropyl or 3% hydrogen peroxide. No soaking is required. After using either of these, just wipe with a clean cloth before using on the next tree.

Pests this month

Two annoying pests you may encounter this month are the Woolly Aphid and the Pear Cherry Slug. Both have a two year cycle and this is called overwintering as the larvae of both return to the root systems of these plants to then emerge later when the weather is milder in early Spring. Another pest that overwinters is the Citrus Gall wasp but this isn't the time to deal with this pest.

Woolly Aphids

They affect apples mainly but can be found on ornamental crab apples and liquidambers. Their appearance is very distinctive with their fluffy white cotton wool. The actual aphid inside this is smaller than a pin head. Before they have a chance to return to the roots, a spray of white oil and pyrethrum while they can be seen now works well.

Later in June the tree will need another spray targeting the nooks and crannies of the tree's branches to dripping point. These aphids will move to the root system during autumn to feed off the root's sap and then migrate to the crevices in early June. They are native to North America and believed to have been introduced through early plantings of introduced American Elm trees.



Pear Cherry Slug

These are not true slugs but the larvae of the native sawfly which is found in Eucalypts, Melaleucas and Bottlebrushes. This slug is a repeat performer. It can go through two cycles annually and over time reduce the vigour of many pear, cherry fruit trees as well as their ornamental cousins.

There have been many methods of control but mostly it has been difficult to eradicate them without some chemical treatment. Methods used are:

- Wood ash thrown on the leaves which can desiccate the slugs
- If there is bare soil under the tree, cultivate the soil to disturb the pupae
- Using corrugated cardboard soaked in oil or detergent, wrapped around the trunk will help catch larvae crawling up the tree. The cardboard needs to be a height of 30cms.
- If you are after using a systemic chemical it is vitally important that this is applied after the last of the fruit and at least 3 months prior to blossom time. This is to protect the bees, which are integral like other pollinators, in providing fruit.
- Neem oil and Pyrethrum sprays will eradicate the larvae on sight.

• Another chemical that is effective and has a holding period of 2 weeks is Spinosad. It will remain toxic to the slug for 2 weeks as long as it hasn't rained in that time.



Tomatoes

They will be coming to their end and any remaining, you can hang the whole plant upside down in a dry area to ripen over

the next few days. If you have been lucky enough to have a surplus of tomatoes, here is a recipe that will allow you to use your produce throughout the year.

Preserved Tomatoes

Ingredients

Tomatoes, parsley, salt and pepper, olive oil

Method

Halve the tomatoes and deseed them. Leave them to drain in a colander for about an hour to allow any excess water to drain. Finely chop the parsley and mix with salt and pepper.

Pack the tomatoes into clean, sterilised jars (either straight from the dishwasher or the oven at 100 C for 15 mins) Top with the parsley mixture and two tablespoons olive oil per jar.

Put a tea towel in the bottom of a large saucepan (large enough to allow the jars to be fully immersed in water) Put the jars in the saucepan and cover with water. Slowly bring to the boil. Once the water is boiling, lower the heat and let simmer for 30 mins. Keep the jars in the saucepan until completely cold, then remove and store in a cool cupboard for up to 6 months.

The Backyard Gardener

Enjoy your garden's gifts this month, Alex

ENVIRONMENT MATTERS

Leaf variegation

While some plants are cultivated for their floral appeal, others captivate us with the presence of their mixed leaf colour. This phenomenon is known as leaf variegation, and is implied when leaves have two or more colours instead of being uniform.

Leaf variegation happens due to the lack of green pigment, chlorophyll. In green areas of leaves, cells have fully made chloroplasts (small structures in cells) and therefore are capable of harnessing sunlight that is needed for photosynthesis. In pale areas, chloroplasts are incomplete, causing the cells to be in an early stage of production and therefore have an inability to produce chlorophyll. For that reason, these areas then rely upon the green areas for their growth, with the plant needing more light than usual for its continual existence.

In general, there are four main types of leaf variegation.

Pattern-gene or "natural variegation" happens when the patterning is expressed



Image courtesy of Priya Mohandoss

in code in the plants' DNA that originates from the parent plant. This coding is then carried through to future generations with the plant being kept in a "stable" state.

Chimeral variegation, the most common type, is caused from random genetic mutations. This happens when several genetic tissues exist within the same plant. Depending upon the type of mutation that is present, each plant showcases its own visual symmetry. Since leaf colour is unpredictable, they are referred to as

being in an "unstable" state.

Viral variegation takes shape when the leaves become infectious. Once affected, sickly leaves spread the virus to other parts of the plant.

Reflective variegation is seen when light reflection is ceased due to small air pockets that are produced under the epidermis of the leaf, resulting in a silvery polish on the leaf surface.

Another factor that affects leaf colour is environmental stress, the cause of pigmented variegation. If there is cold weather or heightened light intensity, this causes an increase in chemicals such as anthocyanins that in turn produce deepening red and purple hues. Chlorophyll breakdown also exposes yellow carotenoids and red anthocyanins that were already existing but concealed underneath the green pigment.

Whether marbled or streaked in form, the phenomenon of leaf variegation is a work of art that will continue to be treasured for its sheer awe and beauty.

Priya Mohandoss



Business Software
and IT Solutions



dev3.com.au

(03) 9123 4215 hello@dev3.com.au



**Ray Appliance
Repair and
Service**

0432981161

**WASHERS, DRYERS,
DISHWASHERS, FRIDGES...**

rayinoz@gmail.com

Alowyn Gardens

OPEN 10AM-5PM EVERY DAY



Call & collect for a great range of
nursery plants ~ 9730 2400

Explore 7 acres of gardens

Enjoy the Maple courtyard
for great coffee

Browse through our extensive nursery

1210 Melba Highway, Yarra Glen
www.alow yngardens.com.au



OUR SERVICES

- Caravan & RV Repairs and Services
- Accredited insurance repairer
- Van refurbishments & modifications
- Licensed Anti - Sway unit installer
- All 12V & 240V power needs
- Solar installations
- Hot water service installations
- And so much more...

ALL ABOUT LEISURE PTY LTD

One stop shop for all your Caravan and RV needs

- 10 Stotts Rd, Wandong, Vic
- 0417 364 549
- info@allaboutleisure.com.au
- allaboutleisure.com.au

Simply



Timber & Roofing

"No problems, just solutions"

03 5743 0000

• General Hardware supplies • Roofing & Timber supplies

Your Local Hardware Specialist'

906 Whittlesea-Kinglake Road, Pheasant Creek

Kinglake West Primary School

The beginning of any year at KWPS means taking the time to establish a sense of belonging and community. We believe our ability to create this for all members of our school community is something that makes our school special.

Notably, one way we do this is through running school wide events such as tabloid sports weekly in the hotter months. This is a terrific opportunity for leaders to develop and model leadership skills as they run the afternoon from set up, pack up, giving instructions and awarding points.

We run activities in houses which allows for students to make connections across grades and year levels – it’s also just fun, active and outside – many of our favourite things.

In the junior classes we teach personal and social capabilities curriculum through picture story books, which leads to students making connections about their own sense of belonging and community. Look at some of the work students did about where they feel they belong.

Where are they now?

Name: Holly Marriott

Years Attended KWPS: 2007 – 2012



My Most Memorable Primary School Moment: I have so many fun memories from primary school. I loved everything sport-related, from dodgeball, footy, and netball to cross-country and athletics.

I also loved playing with my friends at lunch and recess (some of who I am still friends with today). I loved going on school camps and participating in all the fun excursions too.

What am I doing now?: I am currently a flight attendant flying on the A220s for

Qantaslink. I love my job because I get to fly around our beautiful country and meet lots of amazing people.

Fun fact: I learned how to cook Carbonara in Rome, Italy!

A message for current KWPS students: Have fun and do what makes you happy! Make lots of memories as you never know what tomorrow will hold. Travel when you can and take every opportunity that comes your way. Also, be kind to everyone.



Kinglake Primary School

This year, our school is excited to welcome two new teachers to our staff.



Hello, my name is Rhiannon Pamount and I'm very excited to be teaching 3/4 this year at Kinglake Primary School. I have been teaching for five years and really enjoy helping students build confidence and develop a love of learning.

I'm also a busy mum to two daughters — one in high school and one in Grade 6 — so life outside of school is always full of activity. I enjoy reading and travelling with my family in our caravan.

One of the things that stands out to me the most about working at Kinglake Primary is the supportive staff and wonderful children. It really is a great place to come to work each day and I count myself very lucky. My favourite subject to teach is Literacy, as I believe entering a good book is like visiting another world.



Mr Clarke, who brings a great deal of experience to the school, having been a teacher for 32 years. Mr Clarke is also teaching 3/4 this year and art classes. He lives in Yea where he has a hobby farm and enjoys spending time outdoors.

Mr Clarke owns two Jack Russell dogs and likes taking them along when he goes camping whenever he has the chance. We are very happy to have our new teachers join our school community and look forward to the knowledge and enthusiasm they will bring to our classrooms.

On Friday the 13 March, we held our Colour Run at the school in the afternoon, and it was a fantastic success. Families raised an amazing amount of funds that will go towards supporting our literacy program.

The afternoon was made even more enjoyable thanks to the help of our local CFA



members, who sprayed the students with water before the run and hosed off our dedicated teachers. After the run, those teachers bravely faced a slime treatment from the students who raised the highest amounts of money!

Our families have been absolutely fantastic in

supporting this fundraiser, and we are incredibly grateful for their enthusiasm and generosity.

Thank you again to everyone for your support, and a very special thank you to Nicole Moore for organizing and making this wonderful fundraising event happen!



Whittlesea
HARDWARE
TIMBER & BUILDING SUPPLIES

FIREWOOD

4M³ FOR \$880

Includes Delivery!

Excludes Yarra Glen, Healesville, Yea and Alexandra

ph: 9716 2226

www.whittleseahardware.com

TIMBER

- ✓ ROOF TRUSSES
- ✓ HOUSE LOTS
- ✓ TREATED PINE
- ✓ DECKING (ALL TYPES)




Get the right stuff ✓

Middle Kinglake Primary School

By the time this goes to print we'll be breaking for Easter and the term 1 holidays. The 10 weeks of term 1 has flown by with lots of hard work and fun. Classrooms remain settled and everyone has found their groove, enjoying what's been on offer at MKPS.

The weather was perfect for our two week swimming program. Students were fully engaged in the daily lessons and it was great to see the improvement of skills at the end of the program.

Our House Swimming Sports were a huge success with everyone adopting a 'can do' attitude, volunteering for races, showing persistence and encouraging their House mates. Congratulations to Yellow House who were winners on the day in a tight competition of only 10 points separating the 3 Houses. A huge thanks to the families who came along and cheered us on, assisting with transport and helped with jobs on the day- most appreciated.

We currently have a Bulb fundraiser on the go, with our Parents' and Friends' Association to raised additional money for our school. Flyers are available from the school office or you can use the QR code on the flyer.

Michael's love for bikes and cycling has rubbed off on many students and instigated our Ride to School Day. The weather was perfect and students rode from all directions, arriving at school with huge smiles! Thanks to PFA who supplied fruit cups and juice to fuel tired riders. Throughout the day, cycling was the focus of PE sessions.

Congratulations to our Grade 3 and 5 students who demonstrated persistence and resilience working through this year's NAPLAN tests. It can be a daunting experience for some but we were very proud of the way they focused and tried their best- that's all we can ask for. Thanks to Mrs Wilkinson and Mrs Burgess for coordinating the process- which also requires a lot of persistence and resilience!

Our Outside School Hours Care service is continuing to be very popular with lots of new students enjoying what is on offer before and after school. We welcome Bec Cassar to the role of OSHC assistant. Bec will mainly be working in the Afternoon sessions but you'll occasionally see her in the Morning sessions too. Welcome Bec.

The Grade 6 Year 7 Reunion was a huge hit with the current Grade 6s listening carefully to last year's Grade 6s sharing their experience of high school so far. It was great to see our former students, looking so grown up and enjoying their secondary school journey. We hope they continue to do well.

As families are thinking ahead to 2027, we encourage new families to come and check out what MKPS has to offer. Our staff work hard to provide an engaging and individualised Literacy and Numeracy curriculum plus many specialist curriculum subjects including Art, Music, Library, Social & Emotional Learning, Auslan, Health & PE and STEM. We have a huge focus on Sustainability, including the Stephanie Alexander Kitchen Garden Program. Students are involved in gardening, cooking and learning about environmental issues. If you would like more information about our fabulous school, please don't hesitate to contact us. Call us to schedule a personalised tour. Check out our website <https://www.mkps.vic.edu.au> or 'like' our Facebook page for up to date happenings.

Meagan Callander, Principal



MIDDLE KINGLAKE PRIMARY SCHOOL

Spring Bulb Fundraiser

ORDERS CLOSE WEDNESDAY 1ST APRIL

We are excited to partner with Tesselaar Family Farm to offer a beautiful range of high-quality bulbs, plants and perennials - delivered straight to your door and ready for planting.

All orders are posted directly to you and MKPS will receive 40% of all sales.

SHARE WITH YOUR FRIENDS & FAMILY TOO!

Ordering is easy!
Order via the link below OR scan the QR code

bulbfundraiser.com.au/MIDKINGPS

Strathewen Primary School



We've had a very busy start to the year at Strathewen Primary, with lots happening!

I started as the school's Acting Principal, to 'hold the fort' while Principal, Jane Hayward, takes extended leave. It was quite the introduction when, for our first day (which was pupil free), staff relocated to Diamond Valley College in Diamond Creek, as part of our pre-emptive bushfire planning due to the Extreme Fire Danger Rating.

We have been relocated a number of times so far this fire season, and the DVC staff and students have been very welcoming and supportive. Some of the highlights include experiencing a STEM lesson with Chan in a high school Science room, buying yummy treats from the canteen, and making friendship bracelets with some beads gifted to us from DVC.

We participated in the intensive swimming program at Eltham Leisure Centre, attending twice a week for 3 weeks. The children worked with their swim teachers after being placed in groups according to their abilities. Some of our Year 5 and 6 students felt so confident with their swimming schools that they participated in the Sugarloaf District Swimming trials.

Our physical education program has also

included weekly tennis lessons, where the students have honed their ball kitting skills with lots of drills and games. Our instructor, Sky, had to improvise one rainy day and cleverly set up some activities in our multi-purpose room – the kids didn't miss a beat and still thoroughly enjoyed the morning.

Dan the music man has been back to work with the children on music theory and the children's ability to master the 'solfege', or what is known as the do re mi fa so la ti. They have learned about harmony, rhythm and tempo and as a first-time participant, they taught me all about these, with much confidence. The practical aspect of the lessons had us all making music using piano/keyboard, Djembe drums, xylophones and more.

National Red Balloon Day is a significant event for the Country Fire Authority and the communities it serves. It is a day to honour and thank the brave firefighters across Australia, and of course, we want to particularly thank the Arthur's Creek and Strathewen stations for all they have done and continue do for our community.

Creating the red balloons is a way of showing our appreciation and acknowledge the vital role the volunteers play in protecting lives and properties and assisting with important community causes. They loved the creative work the

children had done so diligently for Red Balloon Day.

The School Breakfast Clubs Program is a Victorian Government commitment, delivered by Foodbank Victoria and has filled a few hungry tummies at Strathewen so far this term. We receive weekly deliveries of nutritious food items, to help ensure that all students can access breakfast at school, helping them fully take part in learning and social activities.

Our program is delivered by the school's Wellbeing Officer, Devina Chapman, every Monday and Wednesday morning, is fully funded and comes at no cost to our families or the school. There are lots of yummy options, from toast and cereal to hot food such as baked beans. It's a lovely way to start the day and to get the social battery started as well.

I have really enjoyed my time at Strathewen Primary School so far and getting to know the community. Our families are a close bunch who support each other, and this shows in our fabulous children, who play together across all ages in our lovely and expansive bush setting. We welcome any new enrolments throughout the year and for 2027. Tours are available and can be arranged by contacting the school by telephone on 9714 8278.

Jane McLeod, Acting Principal



Reach over 1,500 people each month. Advertise your business in the *Mountain Monthly* – a not-for-profit community-owned monthly magazine
For advertising enquiries phone
Neesha 0493 740 926

Toolangi Primary School

It has been another wonderful month at Toolangi Primary. Our Prep students have truly found their rhythm and are now well established in their daily routines, showing great confidence as they navigate the environment and deepen their friendships.

Community is at the heart of everything we do at Toolangi PS, and we are so pleased with how our new community pantry is being received. We encourage all our families to stop by and take what they need for their household. Our Tuesday morning playgroup also continues to be a fantastic way for local families to connect and enjoy our school grounds together.

Digital Safety and Hands on Learning

Our Senior class, (Year 3-6 students) took part in an important session this month focused on staying safe online. They spent time learning how to create strong, secure passwords that are hard to guess and discussed the real-world risks of sharing personal information while gaming or browsing. It was a great opportunity for them to think about how to be responsible, kind digital citizens when engaging with others online.

For our Grade 5 and 6 students, the learning moved to the water. They had a brilliant time on the Yarra River at Yarra Junction, practicing their kayaking and teamwork skills. It was a morning full of challenges and plenty of laughs as they worked together to develop new skills and navigate the river as a team.

Sports and Special Guests

We also joined several other local schools for the Small Schools Swimming Carnival. It was a proud day for Toolangi, with our younger students working hard on their swimming skills through a variety of fun water activities.

Our older students stepped up to choose their own relays and events. Most importantly, the sportsmanship from every student was outstanding as they cheered on their friends from the sidelines.

As part of the Sporting Schools Program, students have enjoyed working with qualified instructors in cricket and hockey this term. Through these sessions, they have been learning new games, developing new skills, practising drills, and building their understanding of the rules, all while having plenty of fun and staying active.

Our Junior students have also been participating in weekly Perceptual Motor Program (PMP) sessions. These activities support the development of balance, coordination, spatial awareness, and fundamental movement skills, helping to build strong foundations for both learning and physical development.

A definite highlight for many was a visit from Oreo the dog as part of the Responsible Pet Ownership program. The students loved meeting Oreo while learning some very practical skills, such as how to tell if a dog is happy, frightened, or angry by reading its body language. Through songs and role play, they practiced the safest way to approach a new pet and what to do if they are ever approached by an unknown or aggressive dog.

It has been a busy month for everyone involved, and we are looking forward to keeping this positive momentum going as the term continues.

We are incredibly proud of the learning, opportunities, and strong sense of community that make our school such a special place. If you would like to see this for yourself, we warmly invite you to get in touch to book a school tour for 2027 enrolments. Families with young children are also welcome to join our



Playgroup each Tuesday at 9:00 am, a wonderful way to connect with other local families and experience our school environment. To stay up to date with everything happening at our school, follow us on Facebook and Instagram and be part of our vibrant school community.

Come and see for yourself why our school is such a welcoming and inspiring place for children to learn, grow, and belong—book a tour today and join our school community!



Kinglake Junior Football



U14s enjoy a paintball session as part of teambuilding.

The start of season 2026 is only a few weeks away with games commencing on Sunday 26 April. We are also hosting practice matches for U9s, U10s, U12s, U14s and U16s at home at the Kinglake Memorial Oval on Sunday 19 April so please come along and support our teams.

For any prospective families sitting on the fence this is a great opportunity to come along and meet some other families and see what our club is all about.

With cricket season done and dusted we are also happy to announce that all training sessions are back on the main oval and kids' free meals will be back at the clubrooms post training from Thursday 23 April until the oval closes for commencement of major upgrade works in June.

As part of a team building session our U14s swapped their footy boots for camouflage gear and took part in a paintball session. While there was plenty of friendly rivalry, the boys had

a fantastic time and plenty of laughs.

Such events showcase what junior footy is all about, having fun and building friendships. We would like to thank the following legends for making this night happen: The Carden Family, Natalie Old and the team at Dippin Dots and our club President, Danny Heal.

There is still time to register if your child would like to be a Laker in 2026, please follow the registration link on our website. You will also find all the necessary training

information and important club updates and news. You can also follow our Facebook page for updates as they happen.

Please get in touch with us via the contact details below if you have any questions. We are looking forward to kicking off the season!

Go Lakers!

F: @Kinglakejuniorfootballclub

Website: www.kinglakejfc.org.au

Email: kinglakejfc@gmail.com

Auskick enquiries:

Rebecca - 0423 629 241



**MOUNTAIN RANGES
VET CLINIC**

HOURS

Sunday	Closed
Mon, Tues & Wed	9am-6pm
Thursday	9am-7pm
Friday	9am-6pm
Saturday	9am-12pm

Dr Kate Murray BVSc
5786 1777

Shop 1/31 Whittlesea-Kinglake Road, Kinglake 3763



Kinglake Riders Club

Kinglake Riders rallies are held on the 4th Saturday each month at the club grounds at the Kinglake Trust Reserve, Kinglake.

PRESIDENT: LISA PORTMAN lisaportman@bigpond.com PH 0428 373 171

VICE PRESIDENT: PAT EVERINGTON paeverington@bigpond.com PH 0409 663 943

SECRETARY: ALYSSA FLETCHER alysaafletcher89@gmail.com PH 0458 618 143

Kinglake Cricket Club



Grand Final

On Saturday 14 March the Kinglake Cricket Club was involved in the Robert Young One Day North Metro Cricket Association Grand Final vs Cameron Cricket Club held at JE Moore Park Reservoir.

Captain, Brendon Ryan, won the toss and elected to bowl first. With a large crowd in attendance Kinglake started strongly - Kapil picking up the first 3 wickets of the match. B.Ryan dropped a sharp chance at Covers but was able to recover with a brilliant direct hit to complete a Run Out leaving Cameron CC 4-43.

Kapil struck twice more getting the valuable wicket of Matthew Defelice for 40 runs. Cameron CC 6-81. A super innings from Dylan Guinelly retiring 50 not out lifted the run rate and put the pressure back on Kinglake. Late wickets to Nathan Taylor, Brendan Ryan and 2 wickets in the last over for Alex Pidot. Cameron CC had

been bowled out for a score of 160 off their 35 Overs. Congratulations to Kapil Kapil on taking 5 Wickets in a Grand Final.

Best Bowling Figures: (Overs-Maidens-Run-Wickets)

Nathan Taylor	7-2-10-1
Kapil Kapil	7-0-24-5
Brendan Ryan	5-0-31-1
Alex Pidot	1-0-4-2

Kinglake's Batting started slow with some great tight bowling and fielding by Cameron,

Unfortunately our batsmen couldn't seem to get away with a steady fall of wickets we were unfortunately bowled out for 120 from 32.1 Overs.

Top Scores:

Brendan Ryan	29 not out
Chris Leach	26

Jacob Schroen 21

We would like to congratulate Cameron CC on their Premiership and for hosting the day.

The day was a great experience for our small club and was definitely a successful season.

We would like to thank the entire playing list especially our fill ins Jaron, Chris, Andrew and Scott. Without their help we wouldn't have got as far as we did.

To our Supporters and Committee, Thank You for cheering the playing group on each week.

Our Sponsors, Integrity Real Estate, Simply Timber & Roofing, Bendigo Bank, Anthony Chrystie Transport, Kinglake Rotary, Pace Farms and Scotts Meats.

A very special thank you to Life Member Bruce Stonehouse and his assistants for their scoring duties during the season.

Kinglake West CFA



Alexandra staging ground on Friday, 9 January.

On behalf of everyone at the Kinglake West Fire Brigade, we would like to begin by extending a sincere thank you to our local community.

During our recent deployment to the Longwood fires, the support we received from community members was truly appreciated.

From the generous donations of food and supplies to the kind messages of encouragement, every gesture meant a great deal to our volunteers who were working long hours on the fireground. Knowing that the community stands behind us provides a real boost to morale and reminds us why we do what we do.

It has certainly been a busy few months for our brigade.

Our members have been actively involved in responding to several incidents across the region, most notably the fires at Longwood and Trawool.

These incidents required significant resources and long operational periods, with volunteers committing their time and energy to help protect communities, property, and the environment.

As always, our members stepped up when it mattered most, working alongside other brigades and emergency services to bring these incidents under control.

Amid the busy operational period, we are also pleased to welcome a fantastic group of new members who have recently joined the brigade.

It's always encouraging to see new faces getting involved and contributing to the safety of our community.

Volunteer brigades rely on the dedication of local people, and we are always happy to welcome anyone who is interested in learning new skills, helping their community, and becoming part of a supportive team.

If you have ever thought about joining,

feel free to drop by the station and have a chat with us, there is always room for more volunteers.

We would also like to acknowledge the efforts of the wider community during this Fire Danger Period.

Pleasingly, the Kinglake West Fire Brigade has only had to respond to a handful of burn-offs this season. This is a great outcome and reflects the responsible approach many residents have taken when managing fire on their properties.

By following fire safety guidelines and being mindful of conditions, the community has played an important role in helping reduce unnecessary incidents and keeping everyone safe.

As we move further through the year, we encourage everyone to continue staying fire aware and looking out for one another. Once again, thank you for the ongoing support you show to our brigade and to volunteer firefighters across the region. It truly makes a difference.



Kinglake Bushfire Planning Consultancy

Preparation of:

- Bushfire Management Statements
- Bushfire Management Overlays

For Commercial, Residential and Rural planning applications

0413 188 248 or email Kinglakebpc@gmail.com



KITCHENS BY
LEONARD
INTERIORS
Leaders in Quality design and construction

Steve Leonard 0418 335 475
info@leonardinteriors.com.au

DIRECT TO THE TRADE
CUSTOM BUILT KITCHENS, VANITIES, LAUNDRIES & ROBES
FULL SERVICE or FLATPACK
BUILDERS DISCOUNTS
www.leonardinteriors.com.au

Kinglake SES



What a busy month it has been for the unit with 8 members all achieving their Road Crash Rescue accreditation.

This is a culmination of many training nights where all members get a feel for the tools used and the process and procedures of a rescue. This was followed by a full weekend of primarily using the tools and completing rescues.

The final assessment to test the skills of the members (this occurs in teams of 4 with experienced leaders giving directions) having to perform a rescue 3 times under different scenarios, followed by a written test.

Congratulations to Greg B., Greg H., Jo, Andrew, Keith, Troy, Erin & Evelyn on their achievement. Also thank you to the other members who gave up their time to train and assess them, Alex, Leanne, Andy, Jo H. & Wayne.

This almost doubles the number of active members who can now serve our community when called upon in the time of need.

Over this weekend we destroyed seven cars doing the assessment and we would like to thank those members of our community who donated cars.

If you have an old car that you are looking to get rid of, please contact any of our Deputy Controllers or Controller listed below, these help to maintain our skills.

Further training to be undertaken in April are SWAHS (Safe Working at Heights System), which is a system recognised Australia-wide

by all emergency services and also in the building trade. Also we have members attending the Women in Rescue course, the Cross Cut & Polesaw (Chainsaw) course along with our normal Monday night training.

In the last Month we have attended 17 Requests for Assistance (RFAs)

Road Accidents	3
Trees Down	10
Assist Ambulance	1
Building Damage	3

You may have noticed that one of the building damage callout was a large branch that had fallen on top of the Post Office building where we had to utilise the SWAHS training to remove the branch.

PLEASE REMEMBER IF YOU NEED OUR ASSISTANCE DIAL 132 500

IF IT IS AN EMERGENCY DIAL 000

We again thank all of our community members who drop off bottles and cans, this definitely helps raise funds for our unit. Keith has now got an assistant to help take the bottles and cans down to the Whittlesea Community House, thanks Greg H.

If joining us is something that you are interested in then come down to the unit. We train every Monday night from 7.30pm to 9.30pm except public holidays. Juniors can start from 15 years old. Contact our Unit Controller Leanne Klammer 0428 110 773, Deputy Controllers Andrew Derwent 0419 581 520 or Wayne Leech 0407 400 465 and have a chat, you might find it a good way to meet people in our community and learn new skills at the same time.



Church Services

CHURCH KINGLAKE

St Peter's Memorial Church

Chr Bald Spur/Whittlesea-Kinglake Rds, Kinglake

Sunday service: 10:30am

Instagram @church.kinglake

W: www.churchkinglake.org

E: michelle@churchkinglake.org

ANGLICAN CHURCH

St Peter's Memorial Church:

Cnr Bald Spur/Whittlesea-Kinglake Rds, Kinglake (Mel 250,B4)

St Peters Memorial Church

Sunday service: 8.30 am

Minister: Rev'd Dr Walter Firth 0439 447 395

(03) 9716 2042

Christ Church, Whittlesea

5-9 Wallan Rd, Whittlesea (Mel 246E9)

Sunday service: 10.30am Communion

Minister: Rev'd Dr Walter Firth 0439447395

03 9716 2042

Walter.firth@gmail.com

Weddings and baptisms by appointment

CAMPFIRE HOME CHURCH – KINGLAKE

Monthly fellowship and meal

2nd Sunday of the month from 5pm.

Prayer and fellowship every Wednesday -9pm.

ALL WELCOME – Ring Mark (0408867775) for details.

NEW HORIZONS

28 Forest Street, Whittlesea

Website: www.nhchurch.com.au

Administrator: 9716 3057 / 0408 127 043

ST MARY'S CATHOLIC CHURCH KINGLAKE AT CHRIST THE LIGHT PARISH

128 Main Road, Kinglake

Sunday Mass: 8:30am

Parish Priest: Fr Hien Vu

Office: St Mary's Primary School,

2-20 Fir Street Whittlesea

For all enquires for Baptisms, reconciliation, First Communion or Confirmation,

Please call the office:

Phone: 9412 8493 or Mobile: 0448 101 401

Office hours: Tuesday-Friday, 9am-4pm

Email: merndawhittlesea@cam.org.au

Website: www.christthelightparish.org.au

WHITTLESEA PRESBYTERIAN

Weekly services, including Sunday School

10.30am, 7 Lime St. Whittlesea

Enquiries: A. Johnson 9407 1797

Sunday School: Adele 9715 1198, Diane 5783 1658

Campfire Home Church

The Bullet and the Bible

"Under intense bombardment at Gallipoli, Lance Corporal Elvas Jenkins was struck directly over his heart by a lead ball from an exploding shell. He would have died instantly but the ball struck his New Testament Bible which he carried in his shirt pocket. The Bible saved his life that day. But he did not survive the war".

John Harris, Eternity News April 25 2012

Elvas Elliot Jenkins was born in 1888 at Ararat in country Victoria. He was the eldest of 7 children. When he was 12, the whole family moved to Melbourne and settled in Ivanhoe. He left school at 15 to be an apprentice in a Melbourne printing firm named 'McCarron Bird and Co'.

Elvas became part of a local Methodist church, and gave his life to the Lord Jesus Christ during a service. Elvas soon became very involved in church life, including teaching Sunday school. He eventually became the secretary of the local branch of Christian Endeavour, and was a regular on the preaching circuit. At the age of 22, Elvas left printing and began training for the Methodist ministry in 1910.

During that time, he met Jeanie Reid, and they fell in love. The war postponed any plans they had, but some surviving love letters – which he sent to her from the battlefield – show that marriage was part of their future-plans when he returned. Sadly, this was not to be.

Elvas was ordained in the middle of 1914, and a month later Britain declared war on Germany. He enlisted on 17 September 1914, and was given basic training, before being deployed to Alexandria, Egypt with the 2nd Field Company Australian Engineers. In Egypt, his company was given further training before becoming part of the Gallipoli campaign.

On 7 May 1915, on the beaches of Gallipoli, a shell landed near Elvas and his men. A lead shrapnel bullet struck the middle of his New Testament – which was in his shirt pocket directly over his heart. The bullet passed through half the pages before stopping. His Bible had stopped the bullet and saved his life. In the back of the bible, Elvas wrote, "*Shrapnel bullet from shell of 75mm field gun. About May 6 or 7, 1915.*"

After surviving this dramatic event, Elvas fought on at Gallipoli, and was promoted to Corporal, then Sergeant. After the evacuation in December 1915, Elvas and the Anzacs were re-deployed to the Battle of the Somme, near Pozieres, France.

On 19 July 1916, (14 months after his brush with death) Elvas was ordered to lead a reconnaissance party to locate the exact location of the German trenches. As Elvas led the men in prayer prior to them moving off, a concealed German sniper shot him and severely wounded him. He died the next day. He was among the first of many Australians who laid down their lives in the Battle of the Somme.

Elvas gained an extra year of life – and served his country and his Lord well – but he was also ready for death and what comes next. Many years later, his Bible was donated to the Brisbane Bible Society, which has a collection of historic bibles on display.

Mark Trodd

The information for this brief article about Elvas Jenkins comes from an article by John Harris in "Eternity News April 25th 2012.. A one-hour documentary, "The Bullet and the Bible" is available from the Bible Society.

Campfire Church meets locally each month. See Church directory for contact details.

AUTOMOTIVE



KINGLAKE Exhaust Centre
Specialising in Custom Systems

Harry Southall
0417 363 762

AUTOMOTIVE

**PARKER'S
AUTO PLUS**

The one stop shop, for all of your automotive needs.

Factory 2, 5 Laurel Street, (t) 9716 2010
Whittlesea, VIC 3757 (f) 9716 2094
e) workshop@parkerautoplus.com.au

- CARS ◦ TRUCKS ◦ TRAILERS ◦ MARINE ◦
- EARTHMOVING ◦ AGRICULTURE ◦

ADVERTISING



KEEP IT LOCAL

SUPPORT LOCAL BUSINESSES
By supporting our local businesses and communities we improve our local economy

BIN HIRE

Barber's Bin Hire & Recycling

Walk in bins 6, 8, 12, 15 & 20 cubic metre bins
Available 7 days a week



Call George • 0409 677 687
Location – Arthurs Creek

BUILDERS




MATTADOR
BUILDING & CONSTRUCTION

0400 357 408
Builders of Quality
mattadorbuild@outlook.com



ABN 34616903667 ACN 616903667 • Registered Building Practitioner DB-U 45581 • MBAV REG NO 321759

CARPENTRY



VazBuilt

- BUILDING MAINTENANCE
- RENOVATIONS
- PLASTERING
- TILING
- CARPENTRY

VazBuilt
0414 085 247
vazbuilt@icloud.com

CONCRETING



WHEELER & SONS CONSTRUCTION
WHEN QUALITY MATTERS

BUILDING • CONSTRUCTION • CONCRETING
LANDSCAPING • RETAINING WALLS

RYAN 0421 435 766 | RYAN.NJWHEELER@GMAIL.COM
ABN 64629480316

CONCRETING

FLEETWOOD CONCRETING

*If it's concrete you need, phone Mac!
any style – any size*

- Driveways • Paths • Slabs • Foundations
- Steps • Crossovers
- Plain • Coloured • Stencil • Slate or • Exposed Aggregate

All Excavations & Concrete Cutting Service

ph/fax 5965 2486 or 0418 534 973

BUSINESS & TRADES GUIDE

EARTHWORKS

J.R.'s EARTHWORKS

ABN 43 652 481 089
 EMAIL: info@jrsearthworks.com.au
 WEB: www.jrsearthworks.com.au

EARTHMOVING | MACHINERY | SUPPLIERS

- House sites
- Tank sites
- Trenching /power /phone/water
- Postholes 200mm to 600mm
- Drainage
- Shed sites
- Driveways
- Bobcat
- Excavators
- Truck & trailer
- Dozer
- Grader
- Roller
- Water truck
- Tractor

Damien 0418 506 130

FOR ALL YOUR EARTHWORKS REQUIREMENTS

ELECTRICAL SERVICES

NEW TECHNOLOGIES
 OLD-FASHIONED SERVICE **0448 810 715**

Electrical
 Solar and Batteries
 Data

Kinglake Electrical Services
 REC: 17901

ENGINEERING SERVICES

ROD BURNS ENGINEERING

MANUFACTURE | MAINTAIN | REPAIR

- WELDING OF STRUCTURAL STEEL, ALUMINIUM AND STAINLESS
- TRUCK & UTE TRAYS
- FULLY EQUIPPED WORKSHOP

IF YOU NEED ANYTHING MADE OUT OF METAL, YOU GIVE BOB A RING!

BOB: 0428 300 357
 BURNSMOB56@BIGPOND.COM

On Site Welding Available

SERVICING THE KINGLAKE RANGES & BEYOND FOR OVER 30 YEARS

FOLD | BEND | CUT | MACHINE | TURN | MILL

GAS SUPPLIES

PHEASANT CREEK GAS AND PROPERTY MAINTENANCE KINGLAKE

Your local gas supplier
 Call Dan
0401 870 158

SUPAGAS APPROVED DEALER
 YES WE CAN!

This Supa Starter Pack ONLY AVAILABLE TO NEW CUSTOMERS DOUBLE YOUR GAS!!
 When you order 1 x 45kg gas bottle. Includes free delivery. Limited time only

Find us on Facebook | VISA | e mypos

GAS SUPPLIES

Kinglake GAS

For all your domestic gas requirements contact Barry
5786 2197
 kinglakegas@gmail.com

8.5kg BBQ gas bottles
 Home delivered

LANDSCAPING

WHEELER & SONS CONSTRUCTION
 WHEN QUALITY MATTERS

BUILDING • CONSTRUCTION • CONCRETING
 LANDSCAPING • RETAINING WALLS

RYAN 0421 435 766 | RYAN.NJWHEELER@GMAIL.COM

ABN 64629480316

METAL / SCRAP

SCRAP METAL BUYERS

- COPPER
- BRASS
- STAINLESS
- ELECTRIC MOTORS
- ALUMINIUM
- RADIATORS
- BATTERIES
- CABLES

9467 5505
 16 CLEMENTS AVE BUNDOORA
 MON - FRI 7.30AM-4.30PM

United Metal Recycling

MARKETING SOLUTIONS

Contact
NEESH MARKETING SOLUTIONS

Small business specialist in websites and social media

NEESHA SINCLAIR

www.neeshmarketingsolutions.com.au
 neeshmarketingsolutions@gmail.com

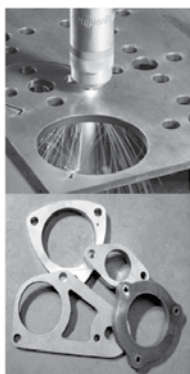
FOLLOW ME

METAL FABRICATION

OEC

CUSTOM FABRICATIONS

- CNC PLASMA CUTTING SERVICE
- MILD, STAINLESS, ALU. UP TO 12MM
- BATCH CUTTING OR ONE OFFS
- GENERAL METAL FABRICATION
- QUICK TURNAROUND
- FREE LOCAL DELIVERY
- KINGLAKE BASED



CRAIG – 0409575846 CUTTING@OEC.NET.AU

PAINTER / DECORATOR

John Kyme

Painter & Decorator

Specialising in all forms of
Painting & Decorating

5780 2569 ah
0418 564 851



PAINTER / DECORATOR



Interior & Exterior Painting & Decorating

Dulux Accredited and Member of Master Painting Australia
Over 25 years of experience, Workmanship Warranty, Public Liability

We believe the key to quality painting is good preparation
for the best result. We are here to service all customers
looking to have the best quality of job.



Please Call KJ
0402771175

E: info@ontimepaintingaustralia.com
www.ontimepaintingaustralia.com

PEST CONTROL



HOME PEST SERVICES

Rick Shaw **0488 004 882**

KINGLAKE LOCAL

Pre-purchase Inspections
Termite Management & Eradication
Ants, Spiders, Cockroaches, Wasps
& Roof Rascals

www.homepestservices.com.au

PLASTERER

PLASTERING

- New Homes
- Extensions & Renovations
- Kitchen & Bathroom Renovations
- Specialising in Restorations

LOCAL
TRADIE

Contact: Peter
5786 5591 or
0417 558 727

PDL BUILDING & MAINTENANCE

PLUMBING SERVICES

Mountain Range Plumbing

Kinglake Area

Free Quotes

All work guaranteed

0418 506 130

Damien

**15 YEARS EXPERIENCE
SPECIALIZING IN**

- Treatment Plants • Septic Systems
- Grey Water Systems • Sewers & Drainage
- Fire Services • Water Tank Installation • General Plumbing
- Domestic & Commercial

email: info@mountainrangeplumbing.com.au
www.mountainrangeplumbing.com.au

PLUMBING SERVICES

Call James
0405 263 224
Licensed to Plumb
 Servicing all local areas
 Over 20 years experience
 Happy to assist with all your plumbing needs
Local, happy plumber
 providing the local community with good honest
 plumbing at local rates

PLUMBING SERVICES

 Licence No. 52096

IRELANDS PLUMBING

For all your domestic water
and waste water needs

- Plumbing and Maintenance
- Water Tanks and Filtration
- Irrigation Systems
- Treatment Plants and Septics

IRELANDSPLUMBING.COM
0447 710 631
 Find us on facebook

PLUMBING SERVICES

KINGLAKE PLUMBING & DRAINAGE

- New Homes
- Septic Tanks
- Gas Works
- Sewer Jet
- Treatment Plants
- Sewerage Maintenance
- Rainwater Tanks & Pumps
- CCTV

CALL OUR FRIENDLY STAFF TODAY FOR A FREE QUOTE

Office: 5786 1498 M: 0400 806 095
 E: accounts@kinglakeplumbing.com.au
 W: www.kinglakeplumbing.com.au

ROOFING

CB ROOFING

For all your
roof plumbing
needs call
Caelan
0403 555 279

 *be wise... advertise*

Reach over 1.5 thousand
people each month
Advertise your business in our
NEW trades & business section

SEPTIC TANK SERVICES



Specialising in septic tank,
treatment plant, grease trap, portable
toilet cleaning and waste removal.

- ☎ 0418 303 761
- ✉ gcsepticcleaning@gmail.com
- 📍 Servicing the Yarra Valley
and surrounding areas.
24/7 call-outs available.

SEPTIC TANK SERVICES

SEPTIC SERVICES



Specialising in

- Septic Tank,
- Treatment Plant Cleaning
- Commercial & Domestic
Grease Trap removal
- Water Tank Cleaning

EPA Accredited

Call Jeff 0421 764 072

WATER SUPPLIES

**Mt Robertson
SPRING WATER**



Kinglake Central
 Filtered Spring Water
 Domestic Water Cartage
 Fully Licensed
 David and Karin
0457 681 992

SUPPORT LOCAL



KEEP IT LOCAL

SUPPORT LOCAL BUSINESSES
 By supporting our
local businesses
and communities
we improve our
local economy

TREE SERVICES



**MORGAN'S
TREE SERVICES P/L**

- Tree pruning • Tree removal
- Chipping service
- Dead wood/dangerous limb removal
- **FREE QUOTE**

30 Years' experience • Fully insured
Competitive rates • Local business

Call Dayle on 0419 895 464

TREE SERVICES



**UNLIMBITED
TREE SERVICES**

- Trees Trimmed/Removed
- Stump Removal
- Chipper/Mulcher Service
- Fully Insured

For a free quote please call
0407 804 472 or 0419 506 739
Fax 5797 2641

Aaron Thomas Neil Roberts
www.unlimbitedtreeservices.com.au

TREE SERVICES

Star Tree Services
QUALIFIED ARBORISTS


- Tree Removal Tree Surgery & Pruning
- Consultations & Reports Elm Leaf Beetle Control
- Mulch & Firewood Sales

5783 3170 Free Quotes Full Insurance Cover
www.treeservices.com.au / mail@treeservices.com.au



WATER BORES

WATER BORES BY

 **North West Drilling**

No nonsense, straight forward advice!
Local business established 35 years plus

Call Graham Brennan
Office 9436 1982 or 0409 362 289
email northwestdrilling@bigpond.com.au

LOCAL BUSINESS DIRECTORY

Receive a FREE Local Business listing when you advertise with MM (normally \$19 per month)

ACCOUNTANTS

ML Accounting Solutions 0438 778 303

APPLIANCE REPAIRS

Ray Appliance Repair & Service 0432 981 161

AUTOMOTIVE (CAR / MOTORCYCLE)

Kinglake Exhaust Centre - Harry 0417 363 762

Kinglake Ranges Service & Repair 0418 515 506

Parkers Auto Plus 9716 2010

BANKS

Bendigo Bank – Kinglake 5786 1656

BIN HIRE

Barbers Bin Hire 9714 8511 or 0409 677 687

BUILDERS

Fair Dinkum Builds 0432 511 024

Leonard Interiors 0418 335 475

Mattador Building & Construction 0400 357 408

BUSHFIRE PLANNING

Kinglake Bushfire Planning Consultancy
0413 188 248

CAFES, BAKERY, FOOD & RESTAURANTS/CATERING

Cappa Rossi's Cafe 5786 1783

Kinglake Fish N Chippery 5786 1828

Kinglake Pub 5786 1230

Little Italy 5786 5216

Songbird Cafe & Larder 5786 1275

CARAVANS & RV'S

All About Leisure 0417 364 549

CARPENTRY

Vazbuilt 0414 085 247

CONCRETE, STONE & BRICKLAYING SERVICES

Fleetwood Concreting 0418 534 973

Wheeler & Sons Construction 0421 435 766

EARTHWORKS

Bulldozer Hire 0473 525 695

JR Earthworks Damien 0418 506 130

ELECTRICIANS & DATA SPECIALISTS

Kinglake Electrical Services Jason 0448 810 715

ENGINEERING, DESIGN & WELDING

R & D Burns Engineering 0428 300 357

FINANCIAL SERVICES

NS Finance & Mortgages – Nicole 0412 169 035

FIREWOOD

Action Firewood 0448 583 861

Whittlesea Hardware 9716 2226

FITNESS

Centre Stage Dance 0400 040 948

FUNERAL HOMES

Halls Funeral Services 9438 5416

GARDEN SERVICES & SUPPLIES

Morgan's Fuel Reduction 0419 895 464

Pheasant Creek Gas and Property Maintenance
0401 870 158

GAS SUPPLIES

Kinglake Gas Barry 5786 2197

Pheasant Creek Gas and Property Maintenance
0401 870 158

GRAPHIC DESIGNER

Ann Friedel Publishing 0418 556 107

HAIRDRESSER

L D Hair Studio 0404 092 927

HARDWARE

Simply Timber & Roofing 03 5743 0000

HEALTH & WELLBEING

Chinese Medicine – Dr Angela Palmer 5786 1889

Innova Osteopathy 0458 112 608

Whittlesea Physiotherapy 9716 2250

IT SERVICES

DEV3 (03) 9123 4215

LANDSCAPING

Wheeler & Sons Construction 0421 435 766

MEDICAL SERVICES

Omnia Community Health 03 5421 1666

Whittlesea Medical Imaging 9716 0278

METAL FABRICATIONS

Outer Edge Creations – Custom Fabrications
0409 575 846

NDIS SERVICE PROVIDER

Care for Living Adrian 0402 095 585
Sarah 0419 116 217

NURSERY / GARDEN

Alowyn Gardens 9730 2400

PAINTERS

John Kyme Painter & Decorator 0418 564 851

On Time Painting Australia 0402 771 175

PEST CONTROL

Home Pest Services 0488 004 882

PHARMACY

Kinglake Community Pharmacy 5786 1109

PLASTERING

NCC Plastering 0435 842 859

PDL Plastering 0417 558 727 or 5786 5591

PLUMBING & PUMP SERVICES/SALES

Irelands Plumbing 0447 710 631

Kinglake Plumbing & Drainage 0408 176 342

Licensed to Plumb 0405 263 224

Mountain Range Plumbing
Damien 0418 506 130

POST OFFICE

Kinglake Post Office 5786 1209

REAL ESTATE AGENTS

Integrity Real Estate 5786 2033

ROOFING

CB Roofing 0403 555 279

SCRAP METAL

United Metal Recycling 9467 5505

SEPTIC SERVICES

GC Septic Tank Cleaning 0418 303 761

Septic Services 0421 764 072

Septic Tank Specialists (Kinglake) 0408 176 344

SUPERMARKET

Kinglake FoodWorks 5763 6602

TANK CLEANING

Accent On Tank Cleaning 0407 684 910

TIMBER SUPPLIES

Simply Timber & Roofing 03 5743 0000

Whittlesea Hardware 9716 2226

TREE SERVICES

Morgan's Tree Services Pty Ltd 0419 895 464

Star Tree Service 5783 3170

Unlimbited Tree Services 0419 506 739

VALUATIONS

Yarra Valley Valuations 5961 9176

VETERINARY SERVICES

Mountain Ranges Vet Clinic 5786 1777

WATER BORES

Northwest Drilling 0409 362 289 or 9436 1982

WATER SUPPLIERS

Mt Robertson Spring Water
0400 389 022 or 0457 681 992

MURRINDINDI SHIRE COUNCIL

Customer Service &

General Enquiries (03) 5772 0333

Alexandra Library (03) 5772 0333

Yea Library (03) 5772 0333

Kinglake Library (03) 5772 0333

Mobile Library (03) 5772 0333

Operations Emergencies* (03) 5772 0333

(eg collapsed bridge or trees over road)

Community Safety Emergencies* (03) 5772 0333

(eg stock on roads or dog attacks)

***These numbers must only be used in the case of an emergency.** For further information on Council or opening hours of the Resource Recovery Centres please visit the website <https://www.murrindindi.vic.gov.au/Home>

**MOUNTAIN
MONTHLY
THE RANGES NEWS**
www.mountainmonthly.com.au



Find us on Facebook
and Instagram

COMMUNITY & EMERGENCY CONTACT NUMBERS

EMERGENCY SERVICES

Kinglake Police	5786 1333
CFA	000
Police	000
Ambulance	000
SES	13 25 00
Nexus Primary Health	1300 77 33 52
Kinglake Ranges Health Centre	
Whittlesea Medical Clinic	
Whittlesea	9716 2207
Dental 24 hr Emergency (Bundoora)	1800 233 684
Mountain Ranges Vet Clinic	5786 1777
Help for Wildlife	0477 555 611
Wildlife Victoria	1300 094 535
Local Laws	0419 572 425
AusNet Services - Power Failure	13 17 99

CRISIS NUMBERS

Berry Street	5770 2200
Kids Helpline	1800 551 800
Lifeline 24hr	13 11 14
Breastfeeding Helpline 24hrs	1800 686 268
24hr Maternal & Child Health line	13 22 29
Poisons Information	13 11 26

ALCOHOL AND DRUG SERVICES

Nexus Primary Health	1300 773 352
----------------------	--------------

MENTAL HEALTH SERVICES

Mental Health Advice Line	1300 280 737
Crisis Assessment & Treatment Team	1300 859 789
Aged Psychiatric Assessment and Treatment	1300 369 005
Adult Mental Health Mon-Fri BH	5735 0333
Afterhours/Weekends/24hrs	1300 369 005
Child And Adolescent Mental Health	
Monday to Friday 9-5	5735 0300
Afterhours	1300 369 005
Mental Illness Fellowship	5735 2000
Goulburn Valley Health Mental Health Services	
Seymour	1300 369 005
Epping	1300 874 243
Heidelberg	1300 859 862

HOUSING SERVICES

Office of Housing – (Seymour DHS)	5793 6400
Rural Housing Network	5735 2000
Pathways – homeless or at risk of becoming	5735 2055
Homeless	
– Outreach Connections Program BH	0409 812 159
The Bridge – for people up to 25yrs	5799 1298
Nexus Primary Health	1300 773 352
Consumer Affairs – Tenancy advice	1300 558 181

AGED AND DISABILITY SERVICES

Aged Care Assessment Service	5823 6000
Aged Psychiatric Assessment and Treatment	1300 369 005
National Dementia Helpline	1800 100 500
Carers' Respite and Information Service	1800 059 059
Community Interlink	1800 222 582
DHS – Disability Access and Response Team	1800 783 783
Regional Information and Advocacy Council	1800 221 944
Victorian Aids and Equipment Program	1300 747 937

Interchange	
– for children with disabilities	5735 4600
Nexus Primary Health	1300 773 352
– Rural Access Worker – Disability Case Management –	
Physiotherapy, OT, Speech, Dietetics, Continence Advice, Podiatry	
SCOPE	5799 0148
Deaf Access Victoria	1300 302 335
Vision Australia	5831 3555
Kinglake Carers' Support Group	5786 1232

CHILD AND FAMILY SERVICES

DHS Child Protection	1800 650 227
	After Hours 13 12 78
Foster Care – Berry Street Victoria	5799 0039
Family Day Care – Murrindindi Shire	1800 633 792
Permanent Care & Adoption – DHS	5832 1500
Specialist Children's Services – DHS	1800 783 783
Familycare	1800 663 107 or 5735 4600
Telephone Parenting Program	1800 880 660
Access & Support Worker	5774 2404

FAMILY VIOLENCE

Nexus Primary Health	1300 773 352
Womens Domestic Violence Crisis Service	9322 3555 or 1800 015 188
Whittlesea Family Violence Unit, Mill Park Police	9407 3333

COUNSELLING SERVICES

ATAPS (Access to allied and psychiatric services)	5734 8400
General Counselling	
– Yea Community Health	5736 0400
Familycare	1800 663 107
Nexus Primary Health	1300 773 352
– Women in Relationships, Financial Counselling, Gambling	
Counselling, trauma, family therapy, play therapy	
G.V Centre Against Sexual Assault	5831 2343
Men & Relationships Program	1800 663 107
Relationships Australia	1300 364 277
Catholic Care	5786 1016
Victims Support Agency	1300 362 739
Victims of Crime Helpline	1800 819 817
ACGB Australian Centre for Grief and Bereavement	9265 2111

HEALTH SERVICES

Hurstbridge Medical Centre	9718 2611
FamilyCare	5735 6400
Yea Medical Centre	5736 0444
Yea & District Memorial Hospital	5736 0400
– Acute care, District nursing, Ultrasound, Pathology, Physiotherapy, Visiting specialists	
Nexus Primary Health (Kinglake Ranges Health Centre)	1300 77 33 52
– Dietitian, OT, Diabetes educator, Asthma educator, Counsellor, Support Worker, general practitioner, practice nurse	
Maternal and Child Health	5786 1337
Lower Hume Palliative Care	5735 8070

COMMUNITY SUPPORT RESOURCES

Kinglake Neighbourhood House	5786 1301
Kinglake Ranges Men's Shed	0402 523 488
5 Oldfield Road, Kinglake West 5757	
email: kinglake-shed@outlook.com	
KRBN	5786 1976

SCHOOLS

Kinglake PS	5786 1284
Middle Kinglake PS	5786 1295
Kinglake West PS	5786 5262
Flowerdale PS	5780 1264
Toolangi PS	5962 9255
Strathewen PS	9714 8278
Yea High	5797 2207
Whittlesea SC	9719 1200
Diamond Valley	9438 1411

KINDERGARTENS/PLAYGROUPS

Kinglake Ranges Childrens Centre	5786 1352
Kinglake Playgroup	5786 1301
Flowerdale Kinder	5780 2816

PUBLIC PLACES

Bollygum Park	5786 1426
Community Centre Bookings	5786 1522
Kinglake Library	5786 1522
Lions Tool Library	0414 555 544
Sports Stadium Bookings	5786 1522
Kinglake West Mechanics Institute	0435 414 110
PO Box 108, Pheasant Creek	3757
Football Clubrooms	5786 1580
National Park	13 19 63 www.parks.vic.gov.au
Flowerdale Community Hall	5780 2027
Flowerdale Community House	5780 2664

PATIENT TRANSPORT

Red Cross Patient Transport Service	0419 872 230
Lower Hume Community Transport Scheme	5799 2965

JUSTICES OF THE PEACE

K Stewart (Kinglake)	0419 347 581
----------------------	--------------

RESOURCE RECOVERY CENTRE

TRANSFER STATION (KINGLAKE)
CHARGES FOR MURRINDINDI RATEPAYERS

We recommend you check the website www.murrindindindi.vic.gov.au for current charges

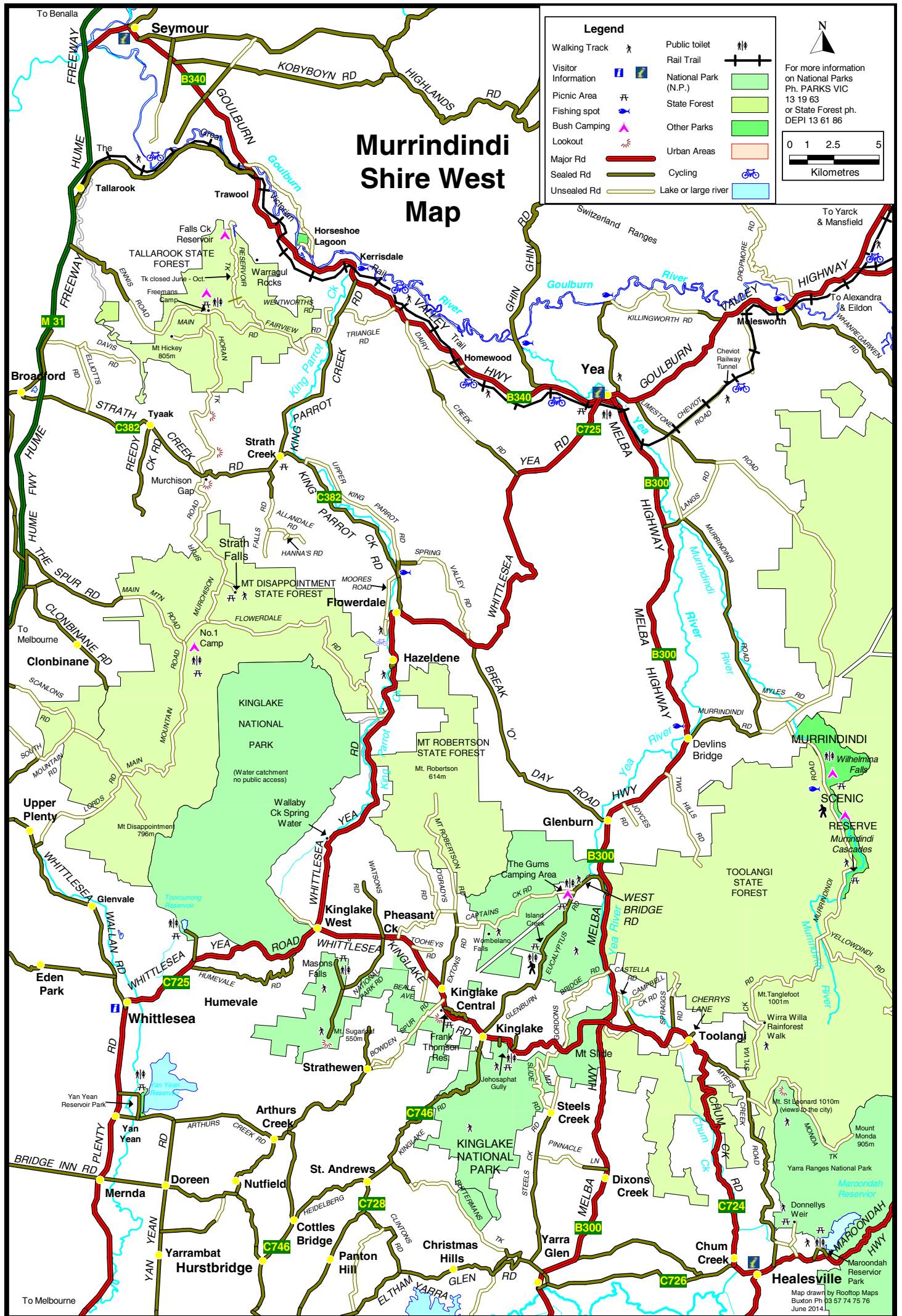
Murrindindi Shire West Map

Legend

Walking Track	Public toilet	
Visitor Information	Rail Trail	
Picnic Area	National Park (N.P.)	
Fishing spot	State Forest	
Bush Camping	Other Parks	
Lookout	Urban Areas	
Major Rd	Cycling	
Sealed Rd	Lake or large river	
Unsealed Rd		

For more information on National Parks Ph. PARKS VIC 13 19 63 or State Forest ph. DEPI 13 61 86

0 1 2.5 5
Kilometres



Map drawn by Rooftop Maps
Buxton Ph 03 57 74 75 76
June 2014



Advertise Locally with Mountain Monthly

Reach your target audience effectively.

Why Advertise Locally?

- Boost your brand awareness.
- Connect with your community.
- Drive local sales.
- Support local community news.
- Targeted reach.

Mountain Monthly is your premier platform for reaching potential customers in the Kinglake ranges. We offer a unique blend of local news, community stories, and stunning photography, capturing the essence of our vibrant region. With a dedicated readership and a strong online presence, Mountain Monthly is the perfect place to showcase your business to a receptive and engaged audience.

Imagine your ad nestled amongst captivating articles and breathtaking images of our local landscapes. This is the power of Mountain Monthly – creating a relevant and trusted environment for your message to resonate with potential customers.

Our Readers Are Your Customers

Mountain Monthly readers are active members of the community who value local businesses and services. They are eager to discover new offerings and support the growth of our region. By advertising with us, you're not just placing an ad; you're investing in a partnership that benefits both your business and the community we serve.

Advertising Options

We offer a range of advertising options to suit your budget and goals:

- **Print Ads:** Full page, half page, quarter page, and smaller options available.
- **Online Ads:** All ads will be featured on our website with an online version of our magazine updated each month.
- **Featured Articles:** Some advertisers are chosen to be featured in articles due to a unique or interesting story about their local business.

Visit our website: Learn more about our readership and advertising options at www.mountainmonthly.com.au



Integrity

Real Estate Yarra Valley



155 Wallaby Way, Pheasant Creek 3 2 5 Acres



\$1,250,000 - \$1,350,000

William Verhagen 0437 371 969



48 Deviation Road, Kinglake 4 3 20 Acres



\$1,450,000 - \$1,550,000

William Verhagen 0437 371 969



24 Robertson Road, Kinglake 4 2 1338 sqm



\$880,000 - \$920,000

William Verhagen 0437 371 969



6 Pine Ridge Road, Kinglake West 4 2 864 sqm



\$730,000 - \$790,000

William Verhagen 0437 371 969

integrity_real_estate

info@integrityrealestate.com.au

Shop 1/2 Kinglake-Glenburn Road, Kinglake



Integrity

Local experts you can trust